

5.1 - 5.9 GHz 23dBi High Gain & Wide Band Directional Panel Antenna

APPLICATIONS AND FEATURES

Applications:

- 5.1 – 5.9 GHz ISM Band
- 5.3 GHz Band Applications
- 5.4 GHz Band Applications
- 5.8GHz UNII applications
- IEEE 802.11a Wireless LAN
- Unlicensed European 5.4 GHz Band Applications
- WiMAX Technology
- 5.8 GHz Wireless Video Systems



Features :

- Superior performance
- Light weight
- All weather operation
- DC Short lightning protection
- Installed for vertical
- Includes tilt and swivel mast mount
- Frequency Ultra-wide
- Can be installed for either vertical or horizontal polarization
- RoHS Compliant

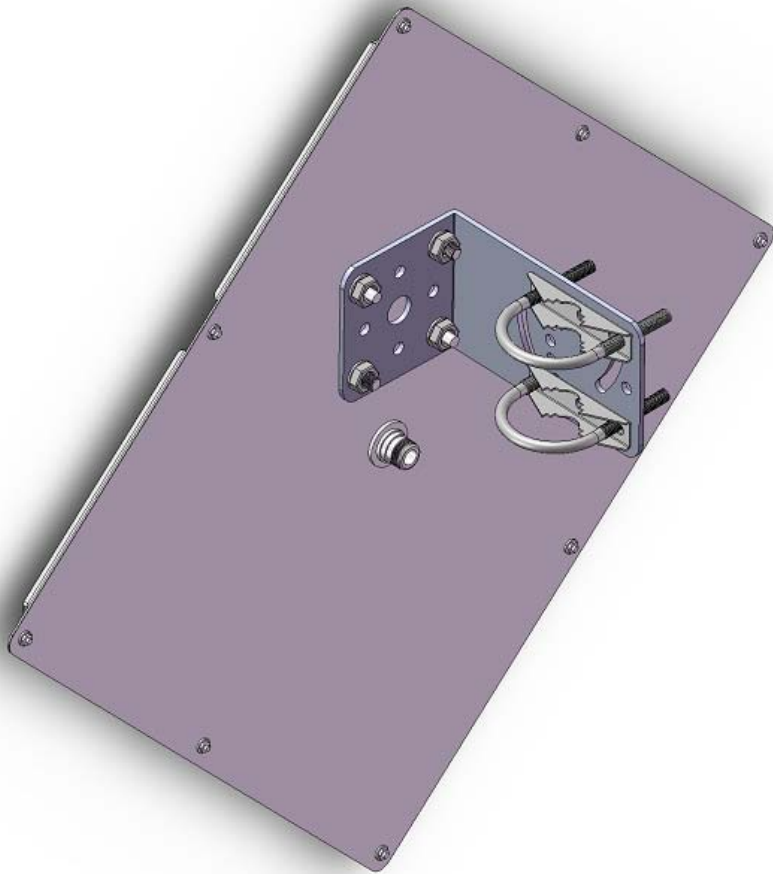
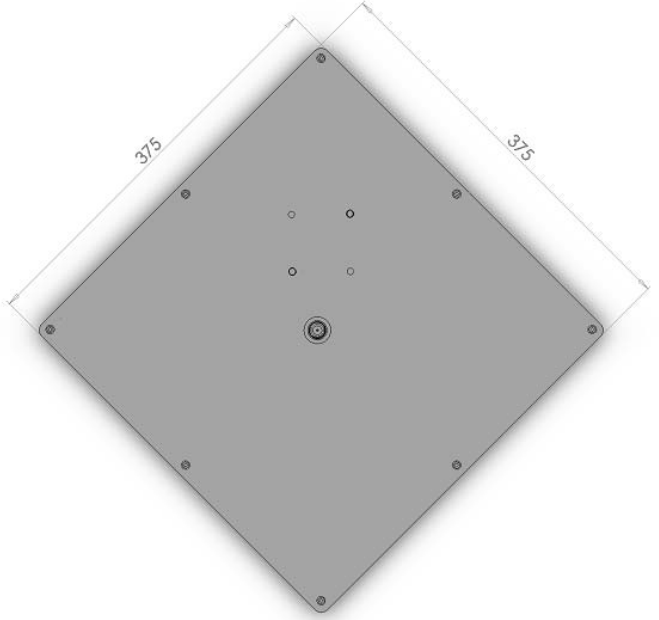
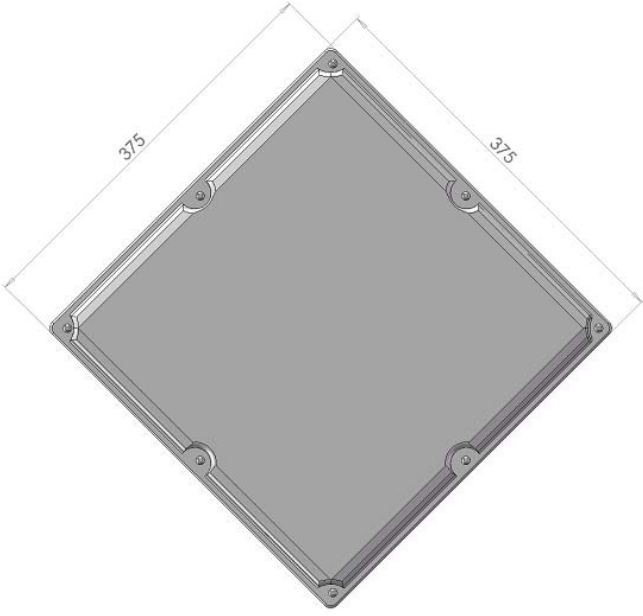
SPECIFICATIONS:

Electrical Specifications

Frequency Range	5100 – 5900 MHz
V.S.W.R	≤ 1.5
Return Loss	≥ -15db
Antenna Type	PCB patch array
Gain	23dBi
Polarization	Vertical or Horizontal
Maximum Power	50W
Vertical Beam-with	8°
Horizontal Beam-with	8°
Impedance	50 Ohm
Connector	N-Female

Mechanical Specifications

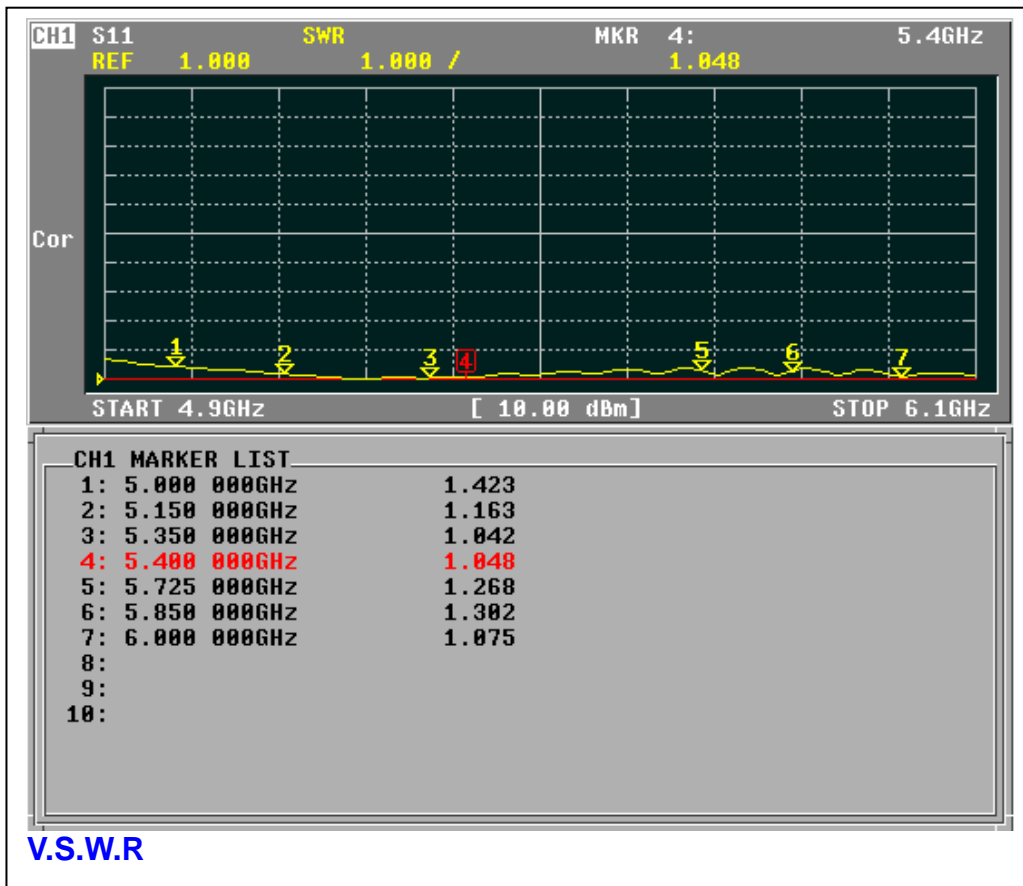
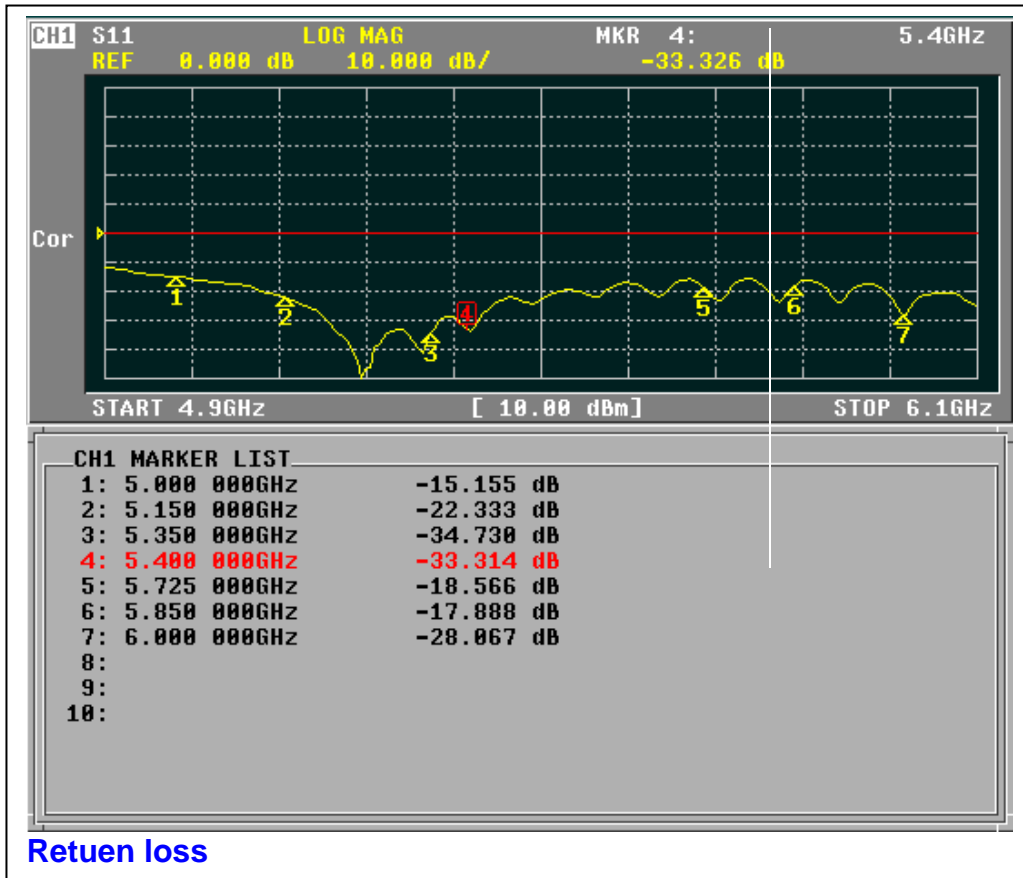
Length	375x375mm
Depth	16mm
Weight	700g
Wind Survival	> 120 MPH
Radome Material	ABS + UV resistance
Operating Temperature	-40°C to +80°C
Down-tilt	“L “ Style 0-30°
Mounting / Clamps	32 – 45mm / U-bolt
RoHS Compliant	Yes



1SKF-515923W Test Report

5.1-5.9 GHz High Gain & Wide Band Directional Panel Antenna

Return loss & V.S.W.R

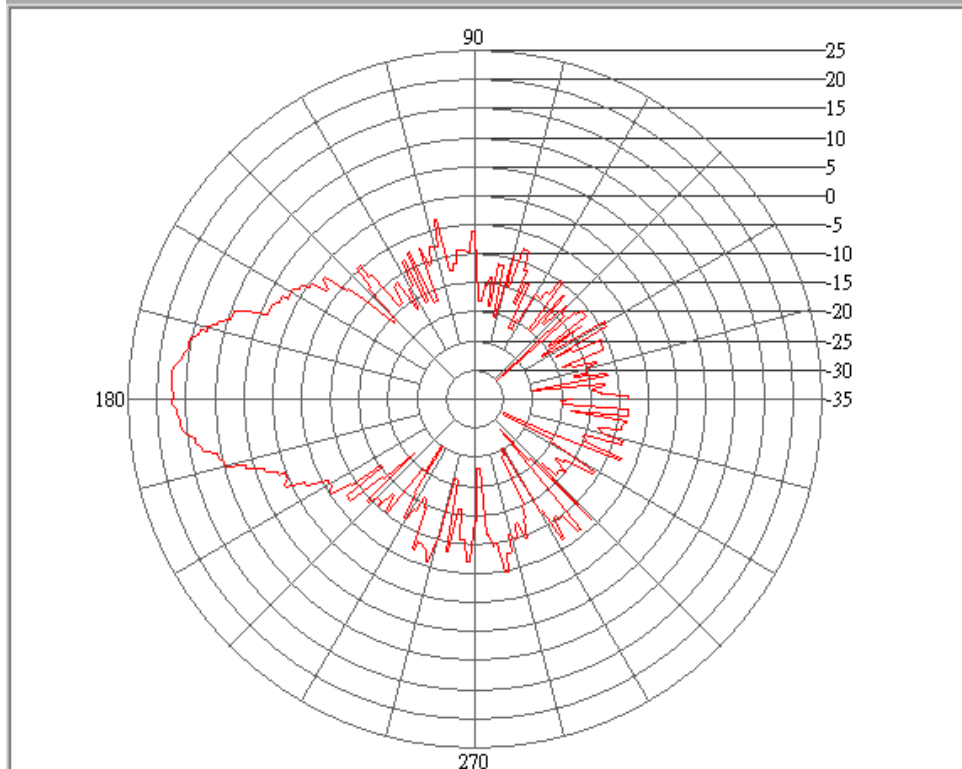


1SKF-515923W 2D Pattern @5100.0MHz

Date / Time : 2009423 / 13:36
Software Version : V1.2
Manufacturer : SKYVERTEX
Measurement Distance : 9M*4M*4M (7M)
Project Number : 20090423
Operator Name : Edsion
Model Name : PA-515923
Serial Number : 1SKF
Temperature : 55
Humidity : 23

E1	
Max Gain (dBi)	17.56
Max Gain@Angle (degree)	176.07
Min Gain (dBi)	-30.03
Min Gain@Angle (degree)	41.44
Average Gain (dBi)	5.36
-3dB Angle L (degree)	-6.99
-3db Angle R (degree)	12.23
HPB (degree)	19.22
FBR (dB)	25.37

E1 5100.0MHz



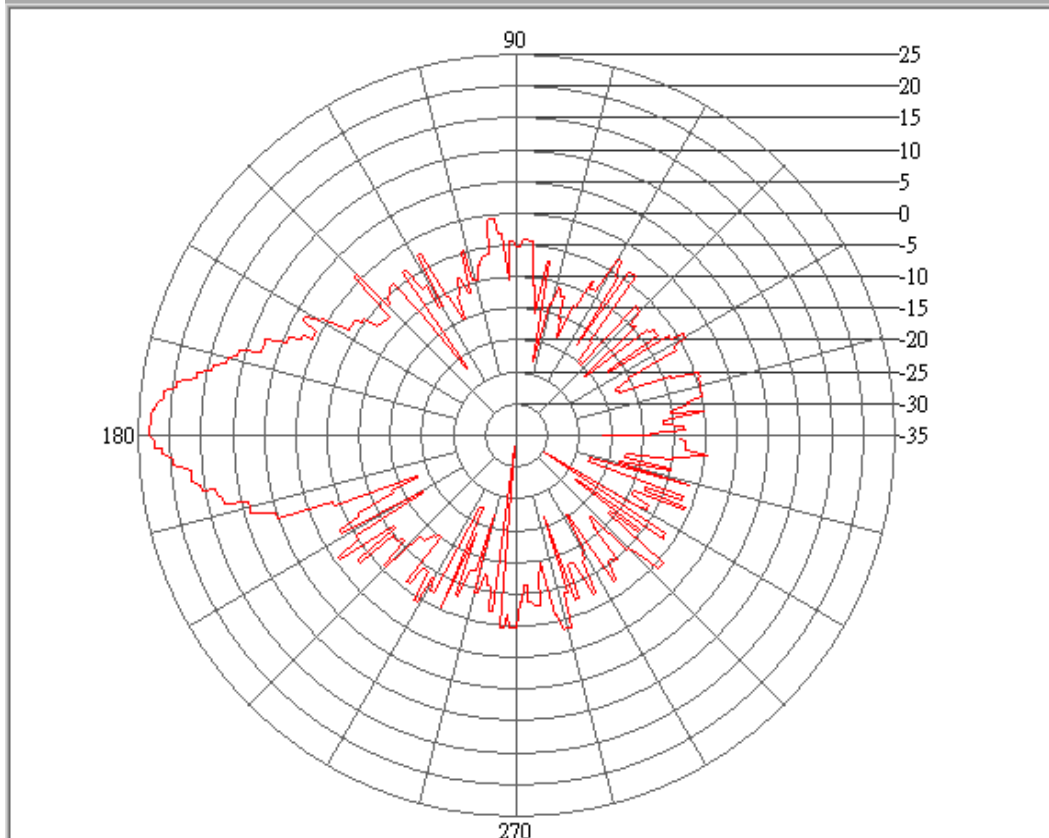
1SKF-515923W 2D Pattern @5500.0MHz

Date / Time : 2009423 / 13:36
Software Version : V1.2
Manufacturer : SKYVERTEX
Measurement Distance : 9M*4M*4M (7M)
Project Number : 20090423
Operator Name : Edsion
Model Name : PA-515923
Serial Number : 1SKF
Temperature : 55
Humidity : 23

E1

Max Gain (dBi)	23.2
Max Gain@Angle (degree)	178.99
Min Gain (dBi)	-33.23
Min Gain@Angle (degree)	263.12
Average Gain (dBi)	9.09
-3dB Angle L (degree)	-5.24
-3db Angle R (degree)	5.24
HPB (degree)	10.49
FBR (dB)	29.22

E1 5500.0MHz



1SKF-515923W 2D Pattern @5800.0MHz

Date / Time : 2009423 / 13:36
Software Version : V1.2
Manufacturer : SKYVERTEX
Measurement Distance : 9M*4M*4M (7M)
Project Number : 20090423
Operator Name : Edsion
Model Name : PA-515923
Serial Number : 1SKF
Temperature : 55
Humidity : 23

E1

Max Gain (dBi)	22.36
Max Gain@Angle (degree)	179.51
Min Gain (dBi)	-30.33
Min Gain@Angle (degree)	291.17
Average Gain (dBi)	7.63
-3dB Angle L (degree)	-3.5
-3db Angle R (degree)	5.24
HPB (degree)	8.74
FBR (dB)	30.65

E1 5800.0MHz

