

User's Manual

ICS-2100

ICS-2102

ICS-2102S15

ICS-2105A

***Industrial RS-232/RS-422/RS-485
over
100Base-FX / 10/100Base-TX
Media Converter***



Trademarks

Copyright © PLANET Technology Corp. 2012.

Contents subject to which revision without prior notice.

PLANET is a registered trademark of PLANET Technology Corp. All other trademarks belong to their respective owners.

Disclaimer

PLANET Technology does not warrant that the hardware will work properly in all environments and applications, and makes no warranty and representation, either implied or expressed, with respect to the quality, performance, merchantability, or fitness for a particular purpose.

PLANET has made every effort to ensure that this User's Manual is accurate; PLANET disclaims liability for any inaccuracies or omissions that may have occurred.

Information in this User's Manual is subject to change without notice and does not represent a commitment on the part of PLANET. PLANET assumes no responsibility for any inaccuracies that may be contained in this User's Manual. PLANET makes no commitment to update or keep current the information in this User's Manual, and reserves the right to make improvements to this User's Manual and/or to the products described in this User's Manual, at any time without notice.

If you find information in this manual that is incorrect, misleading, or incomplete, we would appreciate your comments and suggestions.

FCC Warning

This equipment has been tested and found to comply with the limits for a Class B digital device, pursuant to Part 15 of the FCC Rules. These limits are designed to provide reasonable protection against harmful interference when the equipment is operated in a commercial environment. This equipment generates, uses, and can radiate radio frequency energy and, if not installed and used in accordance with the Instruction manual, may cause harmful interference to radio communications. Operation of this equipment in a residential area is likely to cause harmful interference in which case the user will be required to correct the interference at whose own expense.

CE Mark Warning

This is a Class A product. In a domestic environment, this product may cause radio interference, in which case the user may be required to take adequate measures.

WEEE Warning



To avoid the potential effects on the environment and human health as a result of the presence of hazardous substances in electrical and electronic equipment, end users of electrical and electronic equipment should understand the meaning of the crossed-out wheeled bin symbol. Do not dispose of WEEE as unsorted municipal waste and have to collect such WEEE separately.

Revision

PLANET Industrial RS-232/RS-422/RS-485 over 10/100Base-TX/100Base-FX Media Converter User's Manual

FOR MODELS: ICS-2100 / ICS-2102 / ICS-2102S15 / ICS-2105A

REVISION: 1.2 (JUNE.2012)

Part No.: 2080-AA3600-006

TABLE OF CONTENTS

1. INTRODUCTION	5
1.1 PACKAGE CONTENTS	5
1.2 HOW TO USE THIS MANUAL	5
1.3 PRODUCT DESCRIPTION	5
1.4 APPLICATIONS	6
1.5 PRODUCT FEATURES	8
1.6 PRODUCT SPECIFICATION.....	9
2. HARDWARE INSTALLATION	11
2.1 HARDWARE DESCRIPTION	11
2.1.1 Product Layout	11
2.1.2 LED Indicators.....	12
2.1.3 DB9 and Terminal Block Pin Define	12
2.1.4 Industrial Serial Converter Upper Panel.....	13
2.1.5 Wiring the Power Inputs	13
2.1.6 Wiring the Fault Alarm Contact	14
2.2 MOUNTING INSTALLATION	15
2.2.1 DIN-Rail Mounting	15
2.2.2 Remove DIN-Rail Mounting.....	16
2.2.3 Wall Mount Plate Mounting	17
2.2.4 Stand-alone Installation.....	17
3. INDUSTRIAL MEDIA CONVERTER MANAGEMENT	20
3.1 OVERVIEW	20
3.2 REQUIREMENTS	20
3.3 MANAGEMENT METHODS.....	21
3.3.1 Web Management.....	21
3.3.2 Login the Media converter.....	21
4. WEB MANAGEMENT	23
4.1 MAIN MENU	23
4.2 SYSTEM	24
4.2.1 System Information	24
4.2.2 Password Setting	25
4.2.3 Fault Relay Alarm.....	25
4.2.4 Firmware upgrade	26
4.2.5 Factory Default.....	28
4.2.6 System Reboot.....	28
4.3 NETWORK CONFIGURATION	29
4.4 OPERATION MODE	30
4.4.1 TCP Server Mode	30
4.4.2 TCP Client Mode.....	36

4.4.3 UDP Client Mode	37
4.4.4 Virtual COM Mode.....	38
4.4.5 Telnet Server Mode.....	44
4.4.6 Pair Connection– Local Mode	49
4.4.7 Pair Connection – Remote Mode	50
4.5 SERIAL PORT CONFIGURATION	54
4.6 SMTP	56
5. SOFTWARE VCOM UTILITY	59
5.1 INSTALLING THE VCOM UTILITY	59
5.2 SEARCH THE DEVICE.....	61
5.3 VIRTUAL COM.....	62
APPENDIX A.....	65
A.1 PLANET SMART DISCOVERY UTILITY	65
A.2 DEVICE'S RJ-232/RS-422/RS-485 PIN ASSIGNMENTS.....	66
A.3 DEVICE'S RJ-45 PIN ASSIGNMENTS	67
A.4 RJ-45 CABLE PIN ASSIGNMENT	67
A.5 FIBER OPTICAL CABLE CONNECTION PARAMETER.....	68

1. INTRODUCTION

Thank you for purchasing PLANET Industrial RS-232/RS-422/RS-485 over 10/100Base-TX/100Base-FX Media Converter – ICS-210x series. Terms of “**Industrial Serial Converter**” means the products mentioned titled in the cover page of this User's manual.

1.1 Package Contents

Open the box of the Industrial Serial Converter and carefully unpack it. The box should contain the following items:

Check the contents of your package for following parts:

- **Industrial Serial Converter x1**
- **CD-ROM User's Manual x1**
- **Quick Installation Guide x1**
- **Wall Mount Kit x 1**

If any of these are missing or damaged, please contact your dealer immediately, if possible, retain the carton including the original packing material, and use them against to repack the product in case there is a need to return it to us for repair.

1.2 How to Use This Manual

This Media Converter User Manual is structured as follows:

- **Section 2, Installation**
It explains the functions of ICS-210x and how to physically install the ICS-210x.
- **Section 3, Management**
The chapter explains how to manage the converter by Web interface.
- **Section 4, Web Configuration**
It contains information about the Smart function of ICS-210x.
- **Section 5, Software VCOM Utility**
It explains the software VCOM how to use with the operation Virtual COM.
- **Appendix A**
It contains cable and Smart Discovery utility information of ICS-210x.

1.3 Product Description

The **Web-Smart ICS-210x** series Media Converter / Device Server provide to converts **Industrial Serial RS-232 / RS-422 / RS-485 communication interface over Fast Ethernet networking**. There are RJ-45/SC/LC connectors and single-mode/multi-mode media for your needs. Ethernet signal that allows two types of segments to connect easily, efficiently and inexpensively. It's time saving expense for user and SI, no need to replace the existing Serial equipment and software system.

It extends the distance of deploying Serial equipments and hosts. The selectable fiber-Optic wires on the basis of distance are flexibly provided. Therefore, this product will perfectly satisfy the diverse demands while providing reliable and efficient network solutions based on the distance and budgets of installation.

The ICS-210x make connected Serial equipment becomes IP-based. That also makes them be able to connect to a TCP/IP networking immediately. Each Web-Smart converter is able to manage through the Web Interface. The powerful Web-Smart Media Converter supports Application mode, Serial operation mode connect alarm and IP address, etc. Management function helps reduce the amount of valuable time that a network administrator spends detecting and locating network problems, otherwise it requires visual inspection of cabling and equipment. Multiple connection options for large networking environment are available as well.

The ICS-210x provides a high level of immunity to electromagnetic interference and heavy electrical surges typical of environments found on plant floors or in curb side traffic control cabinets. The feature of operating temperature range of -10 to 60 Degree C coupled with hazardous location certification (Class 1 Division 2) allows the ICS-210x to be placed in almost any location.

The ICS-210x equips with compact, IP-30 standard metal case that allows either DIN rail or wall mounting for efficient use of cabinet space, the ICS-210x provides an integrated power supply source with wide range of voltages (12 to 48V DC or 24V AC) for worldwide operability with high availability applications requiring dual or backup power inputs.

1.4 Applications

Access Control System – Traditional Installation

Most of the enterprise and government use access control plate and Mifare or RFID to authorize the entrance identity. With traditional deploy, access control machine use RS-232 or RS-485 serial interface and cables connect to login server. With connection to ICS-210x Serial over Fast Ethernet Converter, the access control machine is able to be extend over longer distances via fiber optical interface. The ICS-210x also can be linked to a xDSL router to get the internet access capability; the access control can be set and monitored over the internet.

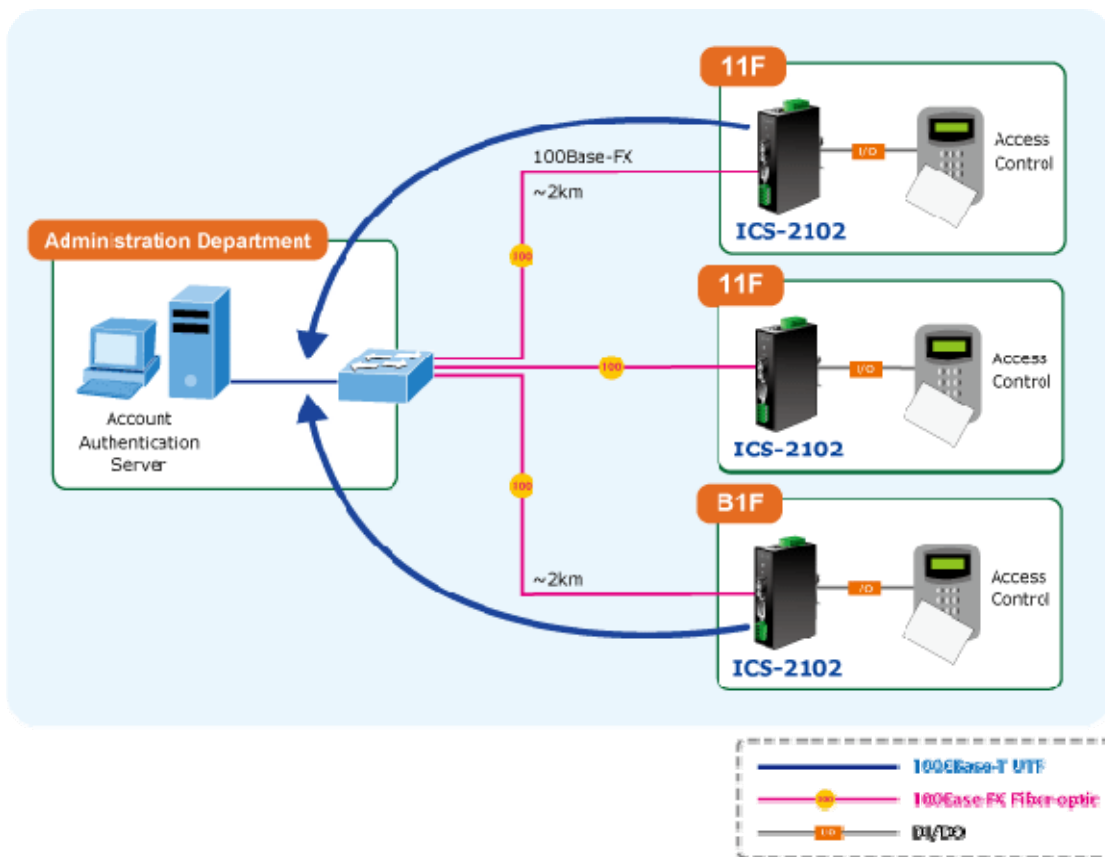


Figure 1-1 Industrial Serial Converter for Access Control System Application

Process Control

To monitor, configure and manage the Robot conveyer including other machines in a manufacturing, PLC (Programmable Logical Control) is required. The PLC is used to drive above the manufacturing machines process. The ICS-210x can be set to TCP Server mode and connect the PLC. The administrator can configure and set command settings through Fast Ethernet intranet to control the PLC, the administrator and workstation. There is no need to be always sets by the side of the I/O machine.

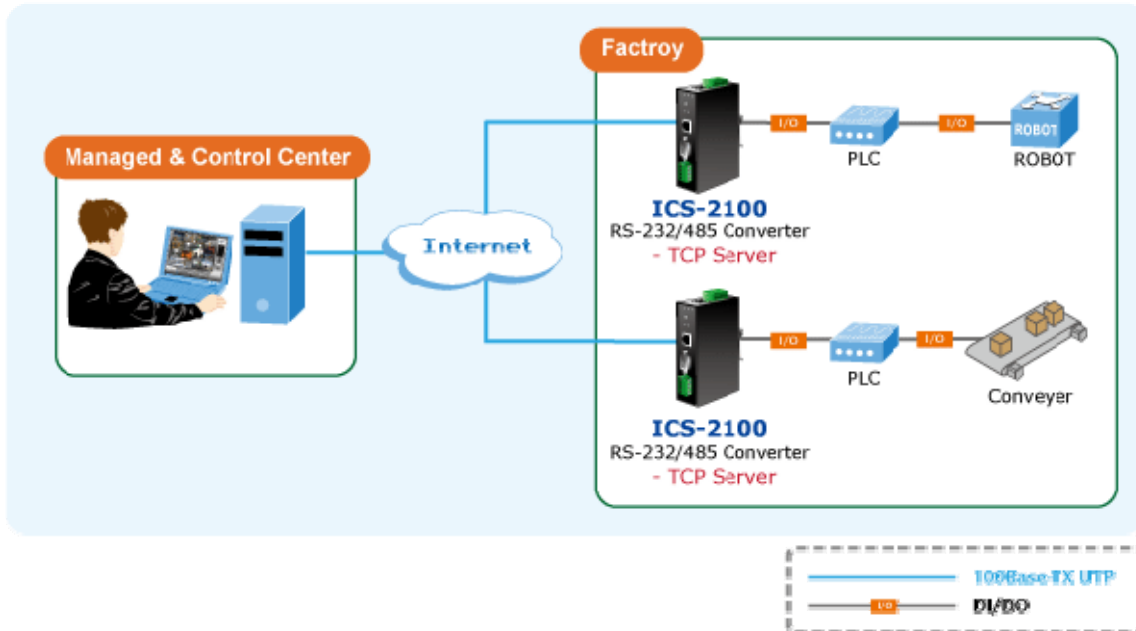


Figure 1-2 Industrial Serial Converter for Factory PLC Application

RTU Data Collect – UDP Mode

Connect with RTU (Remote Terminal Unit) to collect and monitor the data of waves, signal and power utilization. ICS-210x can be used to set-up UDP mode and send data over Fast Ethernet to Local server or over internet to remote server automatically.

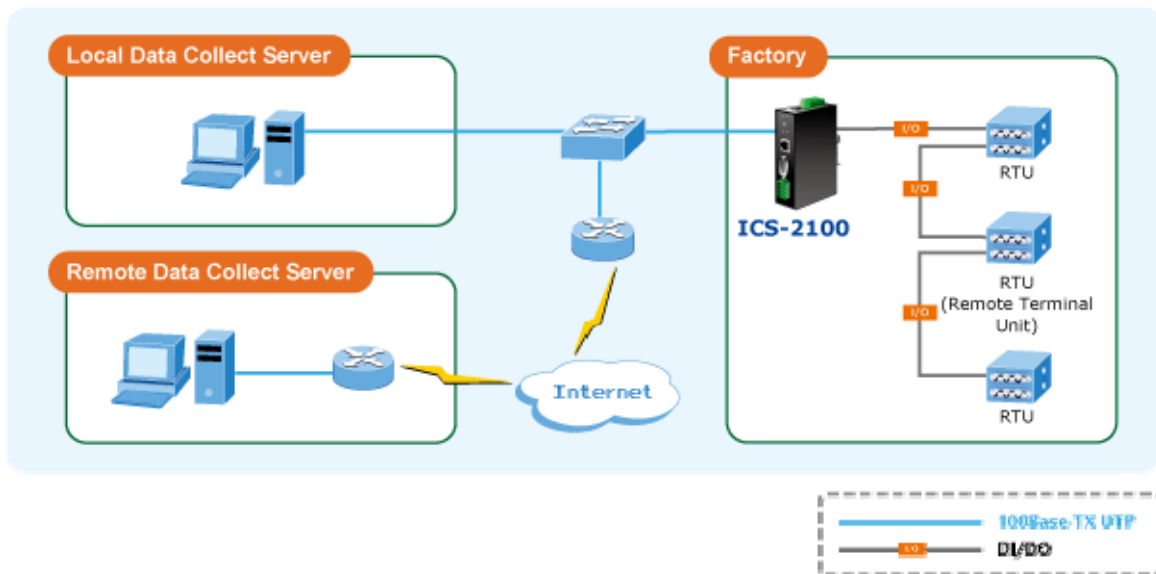


Figure 1-3 Industrial Serial Converter for Factory RTU Application

Surveillance Motion Control – Pair Connection Mode

Using pair connection along with fiber optical patch cord, the ICS-210x extend RS-232/RS-485 interfaces distance from surveillance and scanner to the control keyboard/joystick which is installed in the remote monitor center.

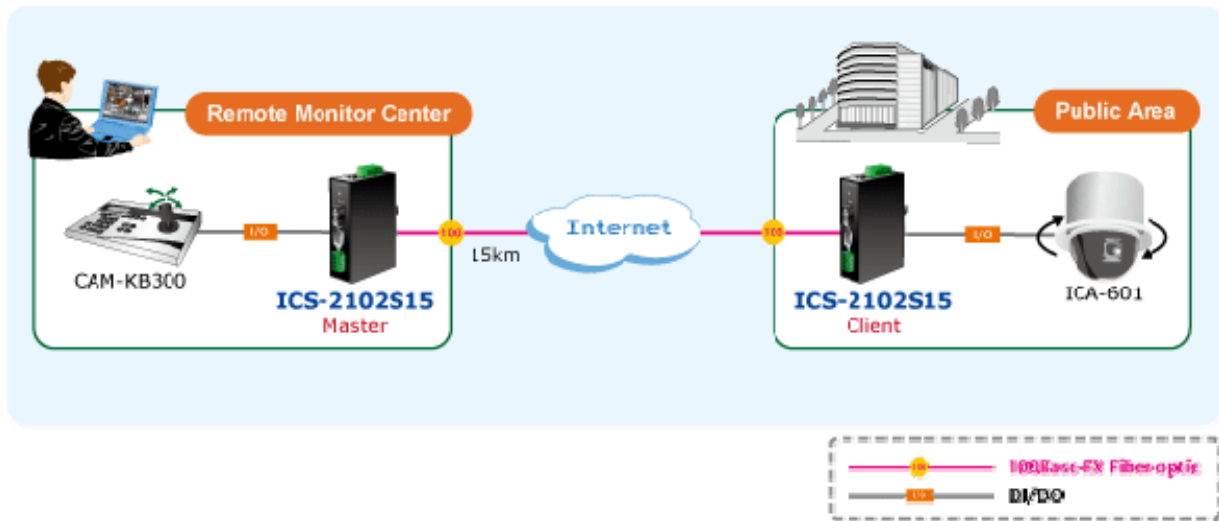


Figure 1-4 Industrial Serial Converter for Distance Extend Application

1.5 Product Features

Serial Interface

- One **RS-232** and the other **RS-422/485** port to one **10/100Base-TX** or **100Base-FX** Media Converter
- Cost effective solution for RS-232/RS-422/RS-485 to Ethernet application
- Supports RS-232 with DB9 interface, 4-wire RS-422 or 2-wire RS-485 with 4-Pin terminal block operation
- Asynchronous serial data rates up to 921600bps

Ethernet Interface

- Complies with IEEE 802.3, IEEE 802.3u 10/100Base-TX, 100Base-FX standard
- Supports auto MDI/MDI-X function on RJ-45 Port for ICS-2100
- Supports 100Base-FX Multi-mode SC connector up to 2km for ICS-2102
- Supports 100Base-FX Single-mode SC connector up to 15km for ICS-2102S15
- Supports 100Base-FX Multi-mode / Single-mode LC connector, distance from 2km up to 120km for ICS-2105A

Smart Functions

- Standard TCP/IP interface and versatile operation modes
- Software Protocol Support ARP, ICMP, TCP/IP, UDP, HTTP server, DHCP client, Telnet server/client
- Built-in IP-Base **Web interface** for remote management
- Serial Operation mode selected via Web management
- Pair Connection mode for connecting two serial devices over a network
- PLANET Smart Discovery utility automatically finds client devices on the network
- Firmware upgrade via HTTP protocol

Hardware

- LED indicators for easy network diagnose
- Reset Button at the front panel for reset to factory default

Industrial Case / Installation

- IP-30 Metal case / Protection
- DIN Rail and Wall Mount Design
- 12 to 48V DC / 24V AC redundant power with polarity reverse protect function and connective removable terminal block for master and slave power
- Supports EFT protection 6000 VDC for power line
- Supports 6000 VDC Ethernet ESD protection
- -10 to 60 Degree C operation temperature

1.6 Product Specification

Model	ICS-2100	ICS-2102	ICS-2102S15	ICS-2105A
Serial Port				
Interface	RS-232 x 1 RS-422 / RS-485 x 1			
Connector	DB9 for RS-232 Terminal block for RS-422 / RS-485			
Baud Rate (Data Rate)	300bps to 921600bps			
Data Bits	5,6,7,8			
Parity Type	1, 1.5/2			
Stop Bit	Odd, Even, None, Space, Mark			
Flow Control	H/W, None			
Signals	RS-232: DCD, RxD, TxD, GND, RI RS-422: Tx+, Tx-, Rx+, Rx- RS-485: Data A (+), Data B (-)			
Fast Ethernet Port				
Standard	10/100Base-TX	100Base-FX		
Connector	RJ-45	SC		LC
Mode	-	Multi-Mode	Single-Mode	Multi-Mode Single-Mode
Distance	100m	2km	15km	2km up to 120km (Vary on SFP module)
Optical Wavelength	-	1300nm	1310nm	(Vary on SFP module)
Cable	Twisted-pair	50 or 62.5/125µm multi-mode fiber cable	9/125µm single-mode cable	50 or 62.5/125µm multi-mode fiber cable 9/125µm single-mode cable
Hardware				
LED Indicators	System: Power 1, Power 2, Fault TP or Fiber Port: Link / Active			

	Serial Port: Serial port mode, RS-232, RS-422 or RS-485	
Management	Web Management PLANET Smart Discovery Utility VCOM	
Operation Mode	TCP Server TCP Client UDP Client Virtual COM Telnet Server Pair Connection – Remote (Slave) Pair Connection – Local (Master)	
Dimension(W x D x H)	135 x 97 x 32 mm	
Weight	425g	431g
Power Supply	12~48V DC / 24V AC, Redundant power with polarity reverse protection function	
Power Consumption	10.1 Watts / 34.44 BTU (max)	
Installation	DIN Rail kit and Wall Mount ear	
Alarm	Provides one relay output for power fail, Alarm Relay current carry ability: 1A @ DC 24V	
Mechanical	Metal	
Environment	Operating Temperature: -10~60 Degree C Storage Temperature: -20~75 Degree C Operating Humidity: 10%~90% RH Storage Humidity: 5%~90% RH	
Emissions	FCC Class A, CE Certification Class A	
Standards	IEEE 802.3 10Base-T, IEEE 802.3u 100Base-TX / 100Base-FX EIA/TIA RS-232/422/485	
Regulatory Approval	RoHS	
Stability Testing	IEC60068-2-32(Free fall), IEC60068-2-27(Shock), IEC60068-2-6(Vibration)	
Note.	Reset Button at the front panel for reset to factory default	

2. HARDWARE INSTALLATION

This section describes the hardware features and installation of the ICS-210x's components on the desktop or shelf. For easier management and control of the ICS-210x, familiarize yourself with its display indicators, and ports. Front panel illustrations in this chapter display the unit LED indicators. Before connecting any network device to the Industrial Serial Converter, please read this chapter completely.

2.1 Hardware Description

2.1.1 Product Layout

Figure 2-1 to Figure 2-3 show front panel of ICS-210x.



Figure 2-1
ICS-2100 Front Panel



Figure 2-2
ICS-2102/2102S15 Front Panel



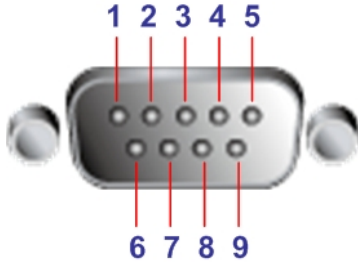
Figure 2-3
ICS-2105A Front Panel

2.1.2 LED Indicators

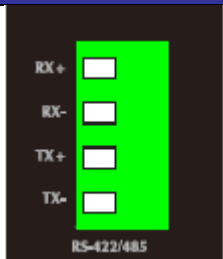
LED	Color	Function
P1	Green	Lights Indicate the power 1 has power.
P2	Green	Lights Indicate the power 2 has power.
FAULT	Green	Lights Indicate the either power 1 or power 2 has no power.
TP or Fiber	Green	Lights To indicate that the Fast Ethernet Port is successfully connecting to the network at 10Mbps or 100Mbps.
		Blinks To indicate the Fast Ethernet Port is receiving or sending data.
Serial	Green	Lights To indicate that the RS-232 Port is connected successfully
		Lights and off To indicate the RS-422 Port is receiving or sending data
		Lights and off faster To indicate the RS-485 Port is receiving or sending data

2.1.3 DB9 and Terminal Block Pin Define

■ DB9 Pin Define for RS-232

	DB9-PIN	RS-232
	1	DCD
	2	RXD
	3	TXD
	4	
	5	GND
	6	
	7	
	8	
	9	RI

■ Terminal Block Define for RS-422/485

	Terminal Block Pin	4-wire for RS-422	2-wire for RS-485
	RX+	RX+	Data A(+)
	RX-	RX-	Data B(-)
	TX+	TX+	
	TX-	TX-	

2.1.4 Industrial Serial Converter Upper Panel

The upper panel of the Industrial Serial Converter consist one terminal block connector within two DC power inputs. Figure 2-4 shows the upper panel of the industrial serial converter.

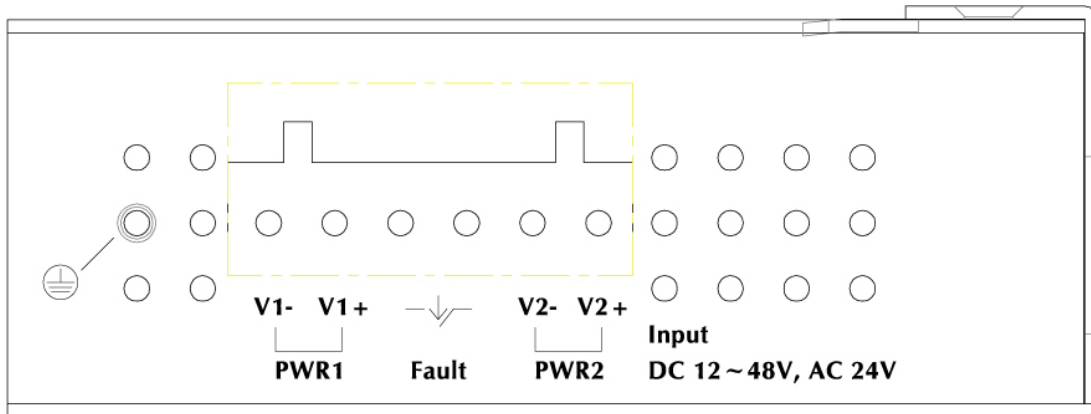


Figure 2-4 Industrial Serial Converter upper Panel.

2.1.5 Wiring the Power Inputs

The 6-contact terminal block connector on the top panel of Industrial Serial Converter is used for two DC redundant powers input. Please follow the steps below to insert the power wire.

1. Insert positive / negative DC power wires into the contacts 1 and 2 for POWER 1, or 5 and 6 for POWER 2. Figure 2-5 shows PWR1 and PWR2 of the industrial serial converter.

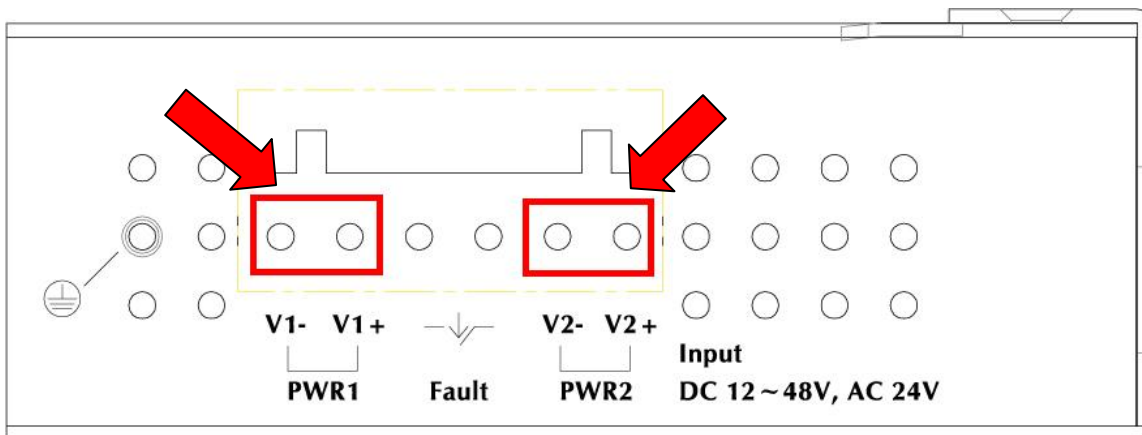


Figure 2-5 PWR1 & PWR2 of Industrial Serial Converter.

2. Tighten the wire-clamp screws for preventing the wires from loosening. Figure 2-6 shows PWR1 and PWR2 pin of the terminal block.



1	2	3	4	5	6
Power 1		Fault		Power 2	
-	+			-	+

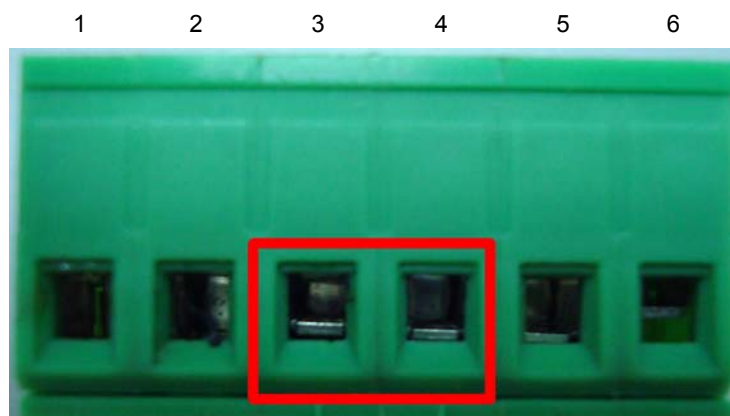
Figure 2-6 PWR1 & PWR2 pin of terminal block.



The wire gauge for the terminal block should be in the range between 12 ~ 24 AWG.

2.1.6 Wiring the Fault Alarm Contact

The fault alarm contacts are in the middle of the terminal block connector as the picture shows below. Inserting the wires, the Industrial Serial Converter will detect the fault status of the power failure, or port link failure (available for managed model) and then forms an open circuit. The following illustration shows an application example for wiring the fault alarm contacts. Figure 2-7 shows fault pin of the terminal block & figure 2-8 shows fault alarm contact.



Insert the wires into the fault alarm contacts

Figure 2-7 Fault pin of terminal block.



Note

1. The wire gauge for the terminal block should be in the range between 12 ~ 24 AWG.
2. Alarm relay circuit accepts up to 30V, max. 3A currents.

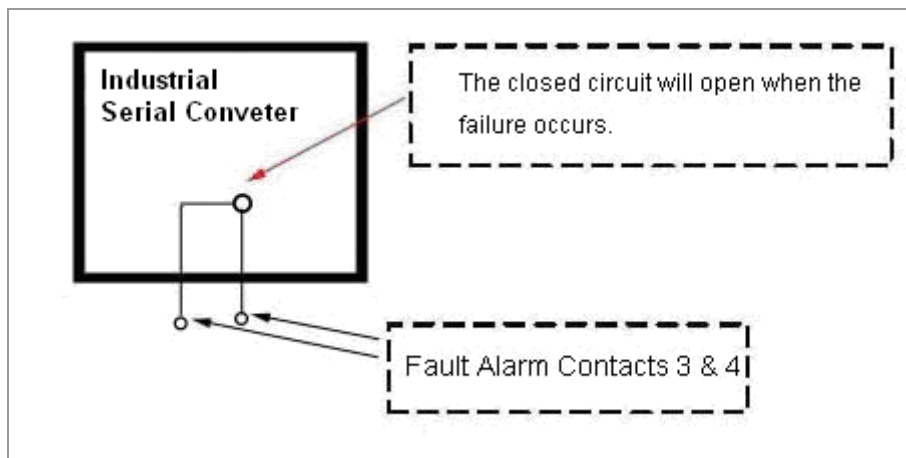


Figure 2-8 Fault alarm contact.

2.2 Mounting Installation

This section describes how to install the Industrial Equipment and make connections to it. Please read the following topics and perform the procedures in the order being presented.



Note

In the installation steps below, this Manual use IGS-801(PLANET 8 Port Industrial Gigabit Switch) as the example. However, the steps for PLANET Industrial Switch & Industrial Media / Serial Converter are similar.

2.2.1 DIN-Rail Mounting

The DIN-Rail is screwed on the Industrial Equipment when out of factory. When need to replace the wall mount application with DIN-Rail application on Industrial Equipment, please refer to following figures to screw the DIN-Rail on the Industrial Serial Converter. To hang the Industrial Switch, follow the below steps:

Step 1: Lightly press the button of DIN-Rail into the track. Figure 2-9 shows how to install Industrial Equipment in DIN-Rail mount.



Figure 2-9 Install Industrial Equipment in DIN-Rail mount.

Step 2: Check the DIN-Rail is tightly on the track. Figure 2-10 shows that install Industrial Equipment finish in DIN-Rail mount.



Figure 2-10 Industrial Equipment installed in DIN-Rail mount.

2.2.2 Remove DIN-Rail Mounting

Step 1: Please refer to following procedures to remove the Industrial Equipment from the track. Figure 2-11 shows how to remove Industrial Equipment in DIN-Rail mount.



Figure 2-11 Remove Industrial Equipment in DIN-Rail mount.

Step 2: Lightly press the button of DIN-Rail for remove it from the track.

2.2.3 Wall Mount Plate Mounting

To install the Industrial Equipment on the wall, please follows the instructions described below.

Step 1: Remove the DIN-Rail from the Industrial Equipment; loose the screws to remove the DIN-Rail.

Step 2: Place the wall mount plate on the rear panel of the Industrial Equipment. Figure 2-12 shows how to attach brackets to one side of the Industrial Equipment.



Figure 2-12 Attach brackets to the Industrial Equipment.

Step 3: Use the screws to screw the wall mount plate on the Industrial Equipment.

Step 4: Use the hook holes at the corners of the wall mount plate to hang the Industrial Equipment on the wall.

Step 5: To remove the wall mount plate, reverse steps above.

2.2.4 Stand-alone Installation

To install an ICS-210x stand-alone, on a desktop or shelf, simply complete the following steps:

Step 1: Turn off the power of the device/station in a network to which the ICS-210x will be attached.

Step 2: Ensure that there is no activity in the network.

Step 3: Attach RJ-45 / SC / LC Fiber cable from the ICS-210x to the network.

Step 4: Attach RS-232/RS-485 cable from the ICS-210x to the want to connect devices.

Step 5: Connect the DC power to the ICS-210x and verify that the Power LED lights up.

Step 6: Turn on the power of the device/station; the PWR LED (Green) should light when all cables are attached.

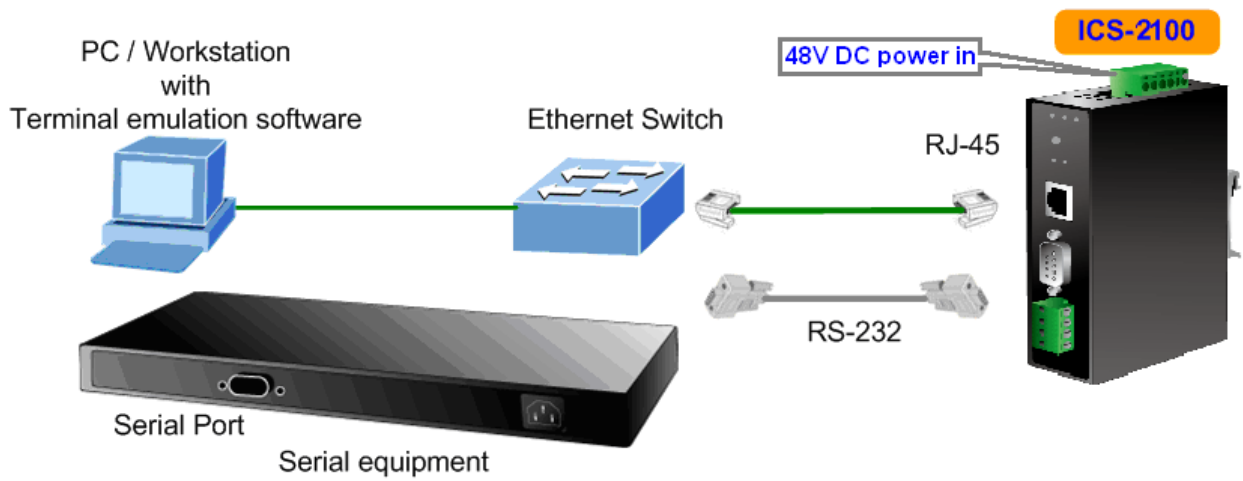


Figure 2-13 ICS-2100 stand alone installation

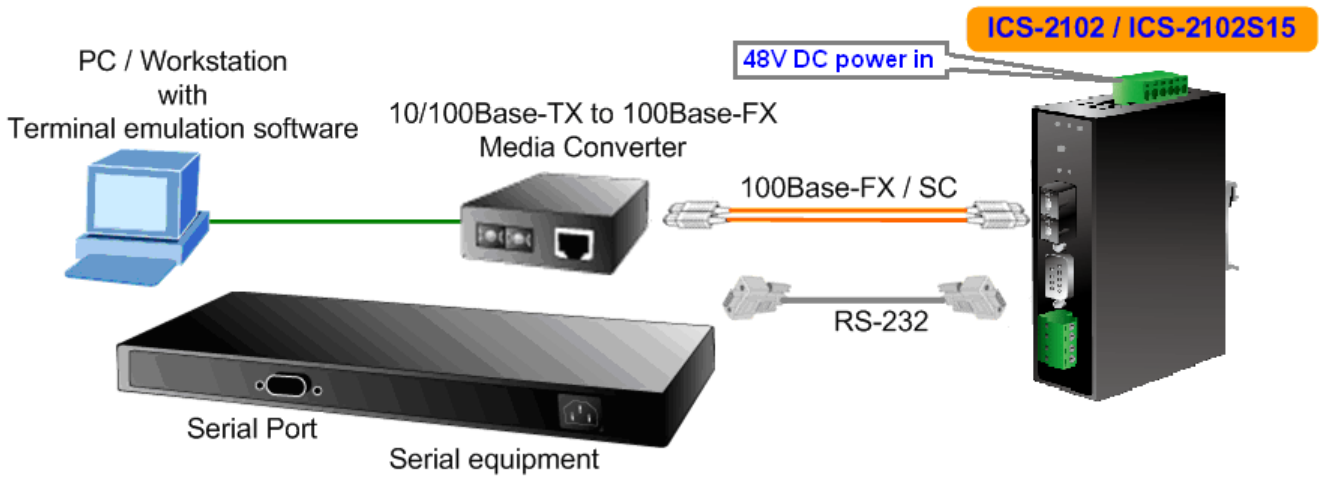


Figure 2-14 ICS-2102 / ICS-2102S15 stand alone installation

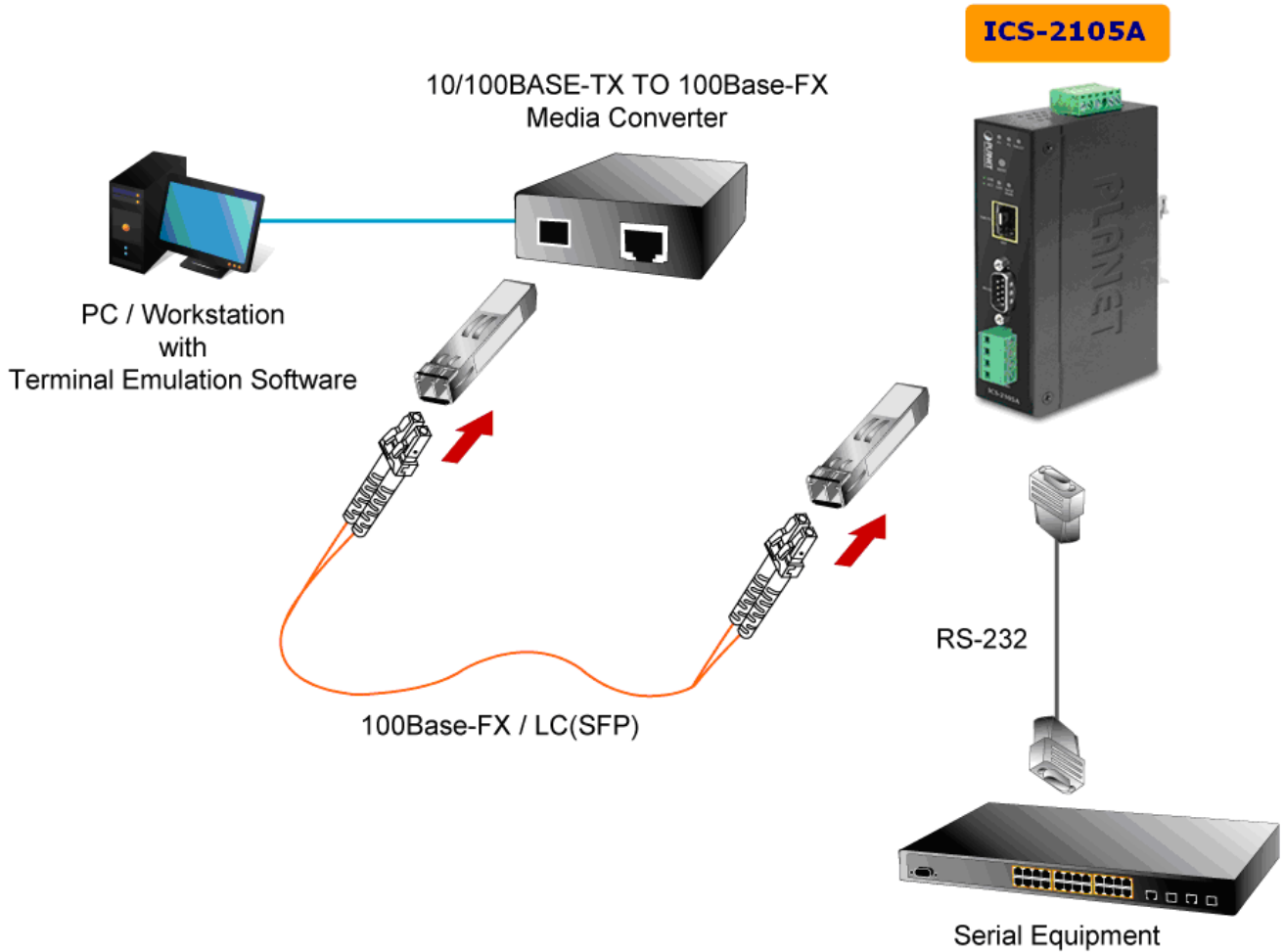


Figure 2-15 ICS-2105A stand alone installation



Note

Please refer to APPENDIX-A for detailed wiring information of the ICS-210x.
To prevent from optic acceptor malfunction, check the both wires / transmitter before power on the converter.

3. INDUSTRIAL MEDIA CONVERTER MANAGEMENT

This chapter describes how to manage the ICS-210x. Topics include:

- Overview
- Management methods
- Assigning an IP address to the ICS-210x
- Logging on to the ICS-210x

3.1 Overview

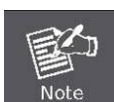
This chapter gives an overview of converter management. The ICS-210x provides a simply **WEB browser interface**. Using this interface, you can perform various converter configuration and management activities, including:

- **System**
- **Network Configuration**
- **Operation Mode**
- **Serial Port Configuration**
- **SMTP**

Please refer to the following Chapter 4 for more details.

3.2 Requirements

- Network cables.
For ICS-2100: Use standard network (UTP) cables with RJ-45 connectors.
For ICS-2102 / ICS-2102S15: Use Multi-mode or Single-mode fiber patch cord with SC connectors.
For ICS-2105A: Use Multi-mode or Single-mode fiber patch cord with LC connectors.
- Subscriber PC installed with Ethernet NIC (Network Card)
- Workstations of subscribers running Windows 98/ME, NT4.0, 2000/2003/XP/7, MAC OS X or later, Linux, UNIX or other platform compatible with TCP/IP protocols.
- Above PC installed with WEB Browser, such as Microsoft Internet Explore or Mozilla Firefox



It is recommended to use **Internet Explore 7.0** or above to access Industrial Serial Media Converter.

3.3 Management Methods

The way to manage the ICS-210x:

- Web Management via a network or dial-up connection

3.3.1 Web Management

The PLANET Industrial Web-Smart Serial Converter provides a built-in browser interface. You can manage the ICS-210x remotely by having a remote host with web browser, such as Microsoft Internet Explorer, Netscape Navigator or Mozilla Firefox.

Using this management method:

The ICS-210x must have an Internet Protocol (IP) address accessible for the remote host.

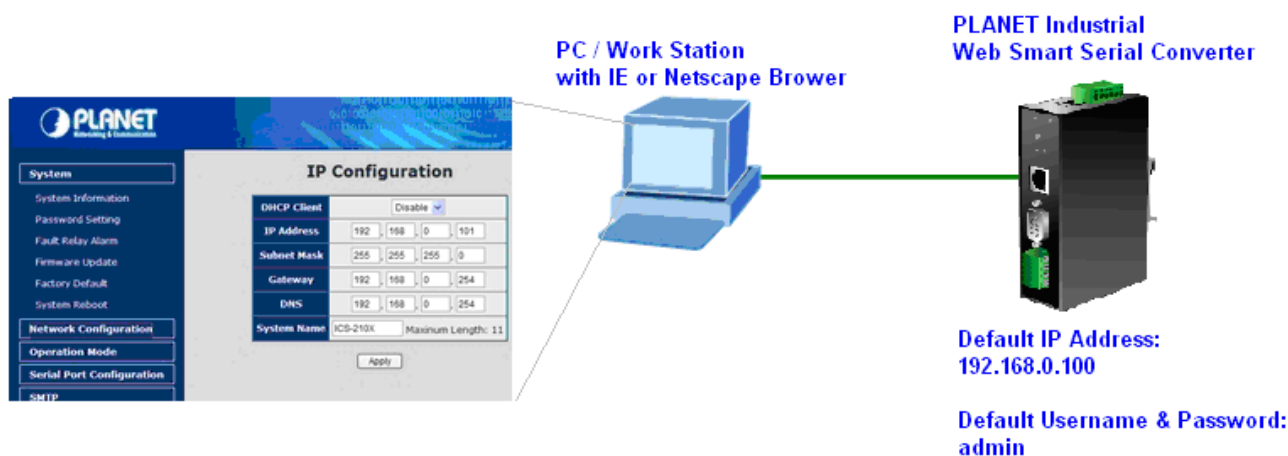


Figure 3-1 Web Management over Ethernet

3.3.2 Login the Media converter

Before you start configure the ICS-210x, please note the ICS-210x is configured through an Ethernet connection, make sure the manager PC must be set on same the **IP subnet address**.

For example, the default IP address of the ICS-210x is **192.168.0.100**, then the manager PC should be set at 192.168.0.x (where x is a number between 1 and 254, except 100), and the default subnet mask is 255.255.255.0.

1. Use Internet Explorer 7.0 or above Web browser. Enter IP address **http://192.168.0.100** (the factory-default IP address) to access the Web interface.
2. When the following login screen appears, please enter the default username and password (default user name and password is "**admin**"). Press Login to enter the main screen of ICS-210x. The login screen in Figure 3-2 appears.

Default IP Address: **192.168.0.100**

Default Account: **admin**

Default Password: **admin**



PLANET
Networking & Communication

PLANET
RS-232/422/485 over Fast Ethernet Industrial Media Converter


Username:

Password:

Login

Copyright © 2011 All rights reserved.

Figure 3-2 Login screen

 Note	<ol style="list-style-type: none">1. For security reason, please change and memorize the new password after this first setup.2. Only accept command in lowercase letter under web interface.
-------------------------------------------------------------------------------------------	---------------------------------------------------------------------------------------------------------------------------------------------------------------------------------------------------------------------

4. WEB MANAGEMENT

The ICS-210x Industrial Web Smart Serial Converter provide Web interface for Converter smart function configuration and make the Converter operate more effectively - They can be configured through the Web Browser. A network administrator can manage and monitor the ICS-210x from the local LAN. This section indicates how to configure the Industrial Serial Converter to enable its smart function.

4.1 Main Menu

After a successful login, the main screen appears, the main screen displays the converter Welcome page. The screen in Figure 4-1 appears.



Figure 4-1 Web Main screen

As listed at the left of the main screen, the configurable smart functions are shown as below:

<ul style="list-style-type: none"> ■ System – 	Check the hardware, software version and System MAC address and IP address of the converter. And the password changed firmware upgrade / factory default / system reboot.
<ul style="list-style-type: none"> ■ Network Configuration- 	Setup the IP address of the converter.
<ul style="list-style-type: none"> ■ Operation Mode – 	Setup the serial port mode: “TCP server”, “TCP client”, “UDP client”, “Virtual COM”, “Telnet Server”, “Pair Connection – Remote (Master)” and “Pair Connection – Remote (Slave)”.
<ul style="list-style-type: none"> ■ Serial Port Configuration- 	Setup the serial port value.
<ul style="list-style-type: none"> ■ SMTP- 	Setup the SMTP mail parameters for further operation of events.

4.2 System

4.2.1 System Information

The System Information page provides information for the current device. System Info page helps a network manager to identify the versions and IP Address etc. The screen in Figure 4-2 appears.

System Information		
Model Name	PLANET ICS-210X	
Software Version	V1.0b090219	
MAC Address	00:30:4F:A1:00:66	
IP Address	192.168.0.100	
Subnet Mask	255.255.255.0	
Gateway	192.168.0.254	
System Name	ICS-210X	
Power Status	Power 1	Power 2
	Not Detect	On
Current Operation Mode	Virtual COM	

Figure 4-2 System Information screen

The page includes the following fields:

• Model Name	Specifies the device Model Name.		
• Software Version	The current software version running on the device.		
• MAC Address	Specifies the device MAC address.		
• IP Address	The current IP Address of the device. The IP Address could be manual assigned. The factory default value is 192.168.0.100.		
• Subnet Mask	The current IP Subnet Mask setting on the device. The factory default value is 255.255.255.0.		
• Gateway	The default gateway for the IP interface. The factory default value is 192.168.0.254.		
• System Name	The current IP Subnet Mask setting on the device.		
• Power Status	Power 1 & 2	On	Indicate the DC power install into the terminal block.
		Not Detect	Indicate the DC power not install into the terminal block.
• Current Operation Mode	Show the current serial port operation mode.		

4.2.2 Password Setting

This function provides administrator to secure Web login. The screen in Figure 4-3 appears.

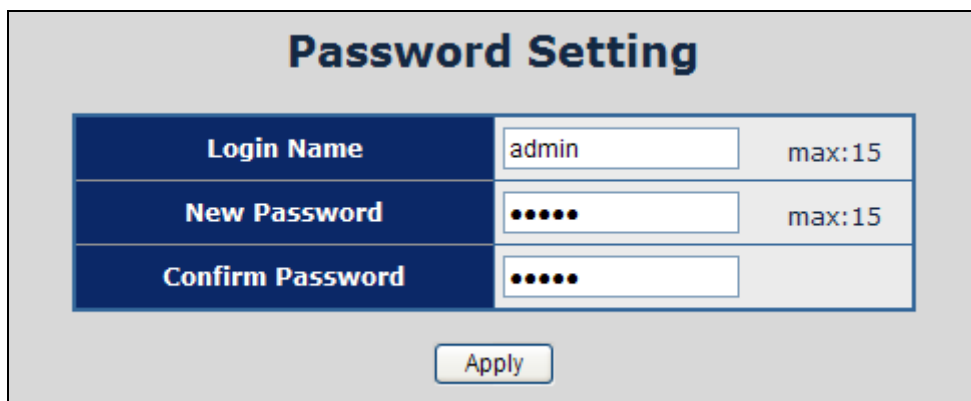


Figure 4-3 Password Setting screen

The page includes the following configurable data:

Login Name	Displays the user name.
New Password	Specifies the new password. The password is not displayed. As it entered an “•” corresponding to each character is displayed in the field. (The maximum length is 15 characters)
Confirm Password	This confirms the new password. The password entered into this field must be exactly the same as the password entered in the Password field.



After change the default password, if you forget the password. Please press and release the “Reset” button in the front panel of ICS-210x, the current setting will be lost and the ICS-210x will restore to the default mode.

4.2.3 Fault Relay Alarm

The Fault Relay Alarm function provides the Power Failure detection. With both power input 1 and power input 2 installed and the check boxes of Power 1 / Power 2 ticked, the FAULT LED indicator will then be possible to light up when any one of the power failures occurs. Please refer to the segment of ‘Wiring the Fault Alarm Contact’ for the failure detection.

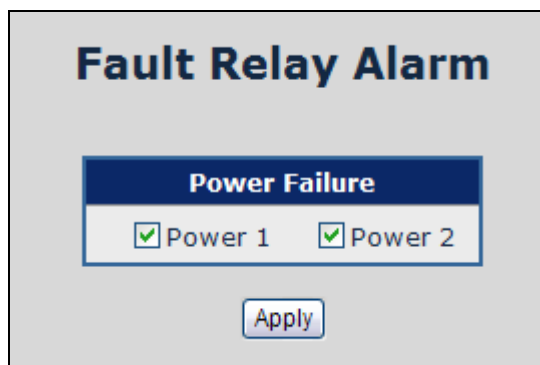


Figure 4-4 Fault Relay Alarm screen

The page includes the following configurable data:

Object	Description
Power Failure:	Tick the check box to enable the function of lighting up the FAULT LED on the panel when power fails.

4.2.4 Firmware upgrade

The **Firmware Upgrade** page contains fields for downloading system image files from the Local File browser to the device. The screen in Figure 4-5 appears.

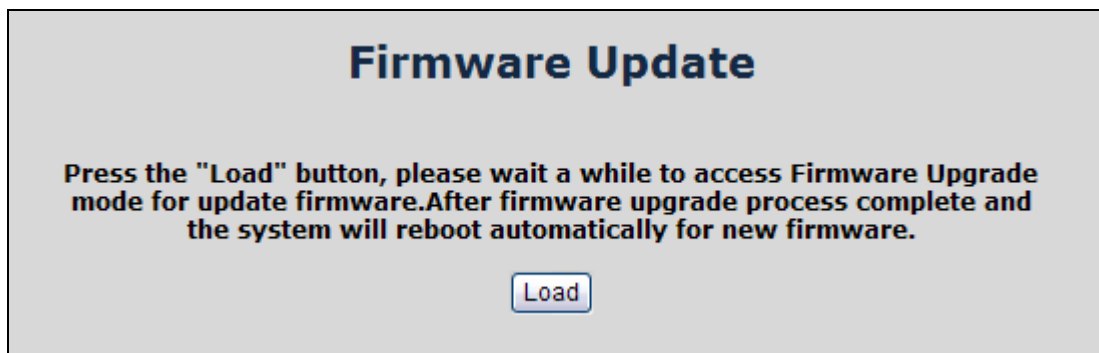


Figure 4-5 Firmware Upgrade screen

To open **Firmware Upgrade** screen perform the following:

1. Click **System** -> **Firmware Upgrade** then click **Load**.
2. The Firmware Upgrade screen is displayed as in Figure 4-6

Erase Flash In Progress (77/128)
 If this webpage doesn't refresh smoothly, please connect to <http://192.168.0.103> to continue.

Figure 4-6 Firmware Upgrade screen

3. Then the "Firmware Upgrade Mode" displayed as in Figure 4-7.

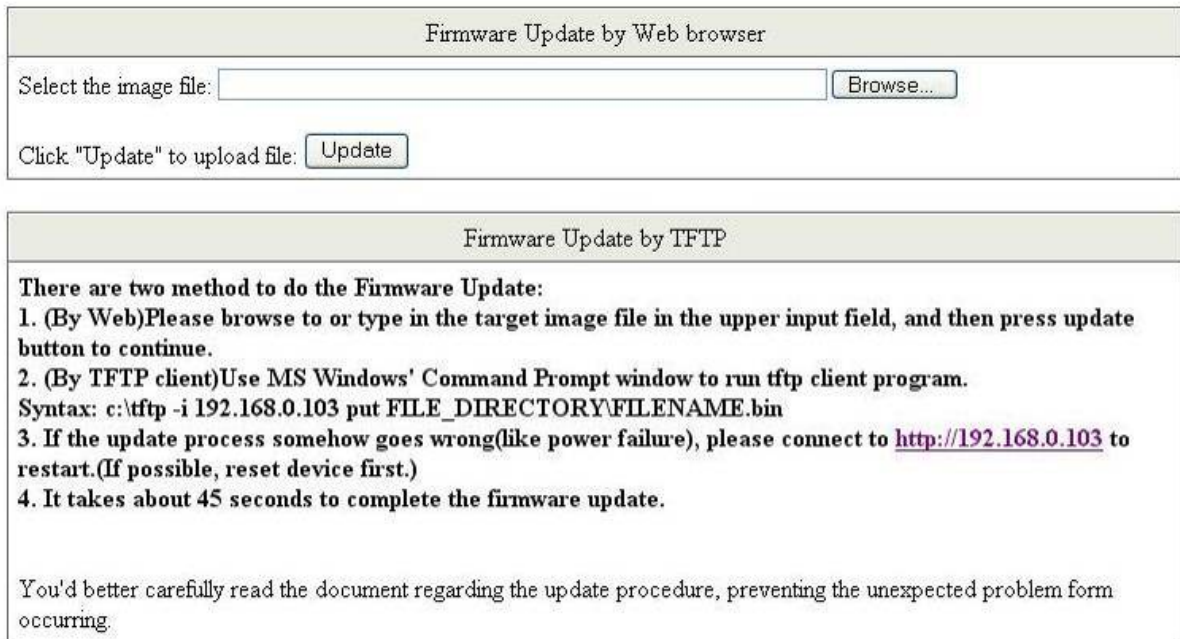


Figure 4-7 Firmware Upgrade screen

Click the "Browse" button of the main page, the system would pop up the file selection menu to choose firmware.

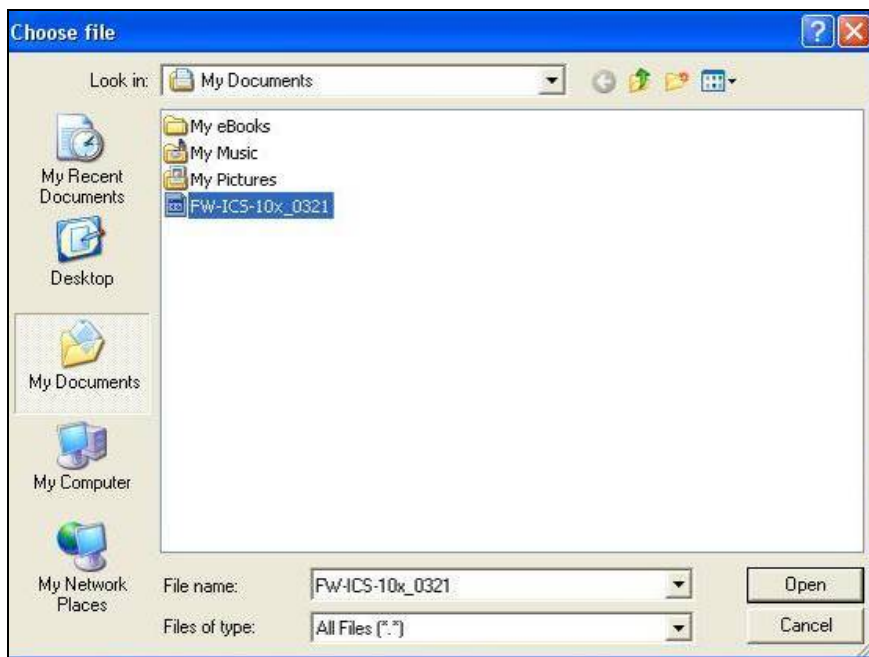


Figure 4-8 Windows file selection menu popup

4. Select on the firmware then click "Upgrade". The firmware upgrade may take 60 seconds.

	Do not power off the converter until the update progress is complete.
	Do not quit the Firmware Upgrade page without press the "Upgrade" button - after the image is loaded. Or the system won't apply the new firmware. Users have to repeat the firmware upgrade processes again.

4.2.5 Factory Default

The **Factory Default** can reset the ICS-210x back to the factory default mode. Be aware that the entire configuration will be reset, and the IP address of the ICS-210x will be set to "192.168.0.100". The screen in Figure 4-9 appears.

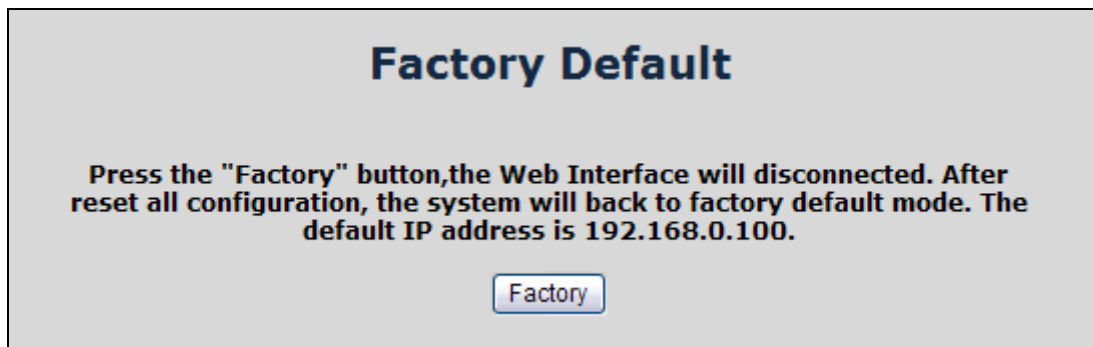


Figure 4-9 Factory Default progress screen

4.2.6 System Reboot

The **System Reboot** can restart the ICS-210x. The screen in Figure 4-10 appears.



Figure 4-10 System Reboot progress screen

4.3 Network Configuration

This function allows setting the value for network configuration. The value is DHCP client, IP address, Subnet Mask, Gateway, DNS and system name. Press the **“Apply”** button to set the value. The screen in Figure 4-11 appears.

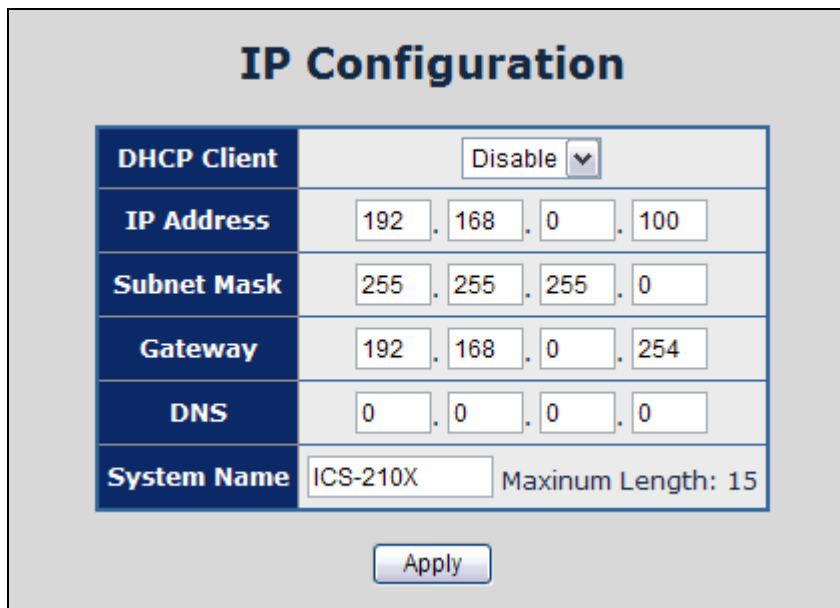



Figure 4-11 Network Configuration screen

The page includes the following configurable data:

<ul style="list-style-type: none"> • DHCP Client 	<p>Disable or enable the DHCP function.</p> <p>When DHCP Client is set to “Enable”, the ICS-210x will send a DHCP request to the DHCP server in the network. Once the DHCP Server get the request, it will assign a dynamic IP address, subnet mask and gateway to the ICS-210x.</p> <p>The factory default setting is “Disable”</p>
<ul style="list-style-type: none"> • IP Address 	<p>Assign the converter IP Address.</p> <p>The factory default value is 192.168.0.100</p>
<ul style="list-style-type: none"> • Subnet Mask 	<p>Assign the converter Subnet Mask.</p> <p>The factory default value is 255.255.255.0</p>
<ul style="list-style-type: none"> • Gateway 	<p>Assign the converter gateway.</p> <p>The factory default value is 192.168.0.254</p>
<ul style="list-style-type: none"> • DNS 	<p>DNS is the way that Internet domain names are identified and translated into IP addresses. A domain name is an alphanumeric name, such as planet.com, that it is usually easier to remember. Assign the DNS server IP address.</p>
<ul style="list-style-type: none"> • System Name 	<p>Allow set value for system name. (The maximum length is 15 characters).</p>

 <p>Note</p>	<p>When DHCP Client is set to Enable, the IP Address, Subnet Mask, Gateway and DNS fields are not allow to be changed.</p> <p>If the ICS-210x is set to DHCP Client enable, you can use PLANET Smart Discovery or PLANET VCOM Utility to search the ICS-210x which with DHCP assigned IP address.</p>
-------------------------------------------------------------------------------------------------	---------------------------------------------------------------------------------------------------------------------------------------------------------------------------------------------------------------------------------------------------------------------------------------------------------------------

4.4 Operation Mode

The ICS-210x make connected Serial equipment becomes IP-based. That also makes them be able to connect to a TCP/IP networking immediately. The ICS-210x allow traditional Computer/Client COM ports access to a serial equipment anywhere on the Ethernet LAN network.

This **Operation Mode** configure page allows setup Serial interface operation mode as below:

- **TCP Server**
- **TCP Client**
- **UDP Client**
- **Virtual COM**
- **Telnet Server**
- **Pair Connection – Local(Master)**
- **Pair Connection – Remote(Slave)**

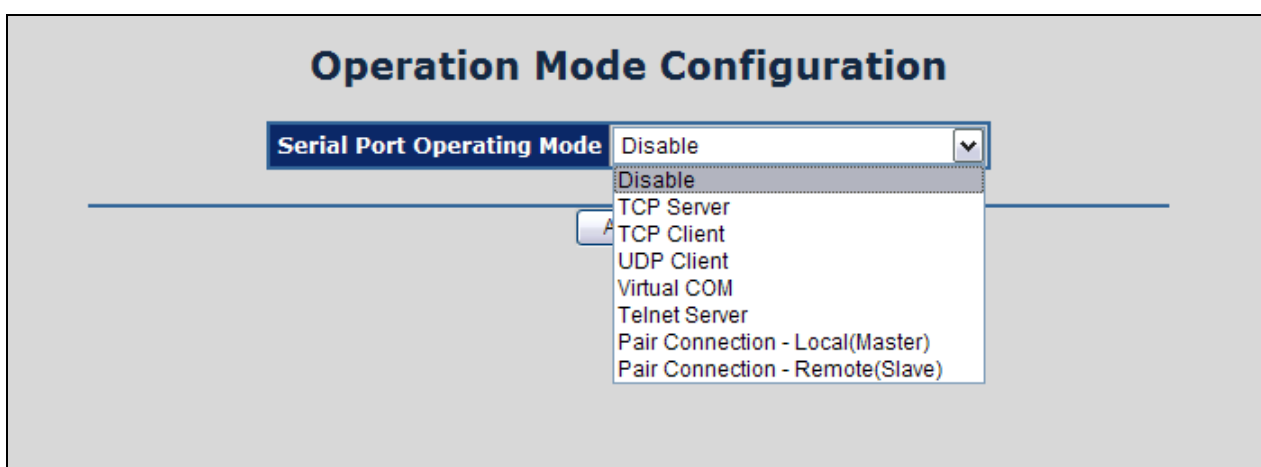


Figure 4-12 Operation Mode Configuration screen

Select the operation mode for the application and press the **“Apply”** button to take affect.

4.4.1 TCP Server Mode

When the ICS-210x be configured to **TCP Server** mode, it allows Serial device that connected to serial port of ICS-210x to establish TCP communication over Intranet or Internet network between:

- Remote Host (Computer) with Serial applications using TCP/IP network socket programs
- Other ICS-210x with **TCP Client** mode

It opens the TCP port of ICS-210x to wait for serial application to establish a TCP connection. After the connection is established, data can be transmitted in both directions.

The parameter defines the maintenance status for listen for the TCP connection.

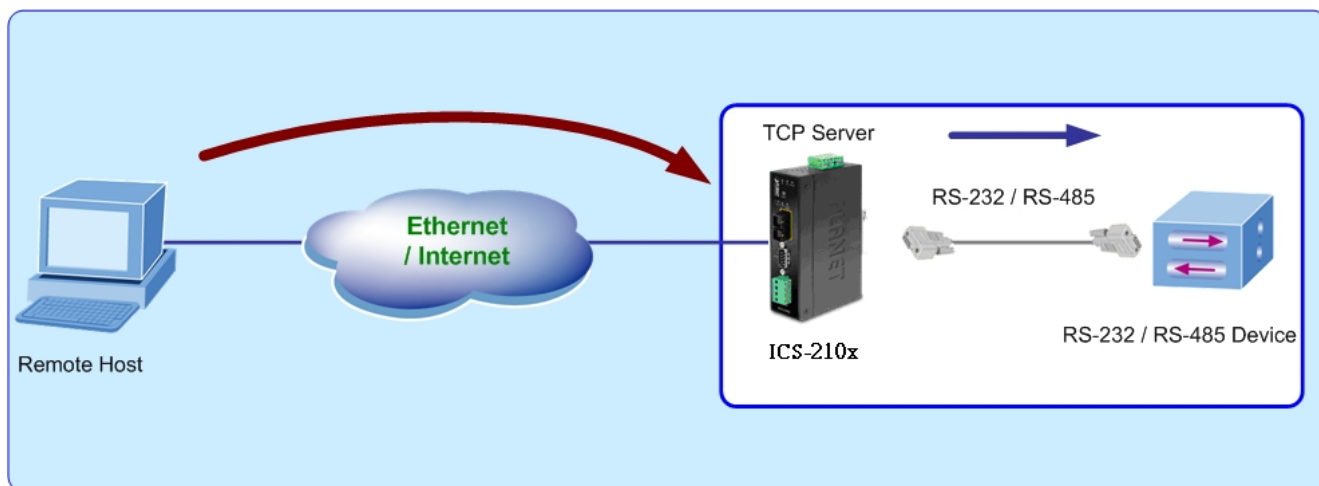


Figure 4-13 TCP Server mode

The screen in Figure 4-13 appears. When the changed operation mode, the user should be changed the Serial Port Configuration.

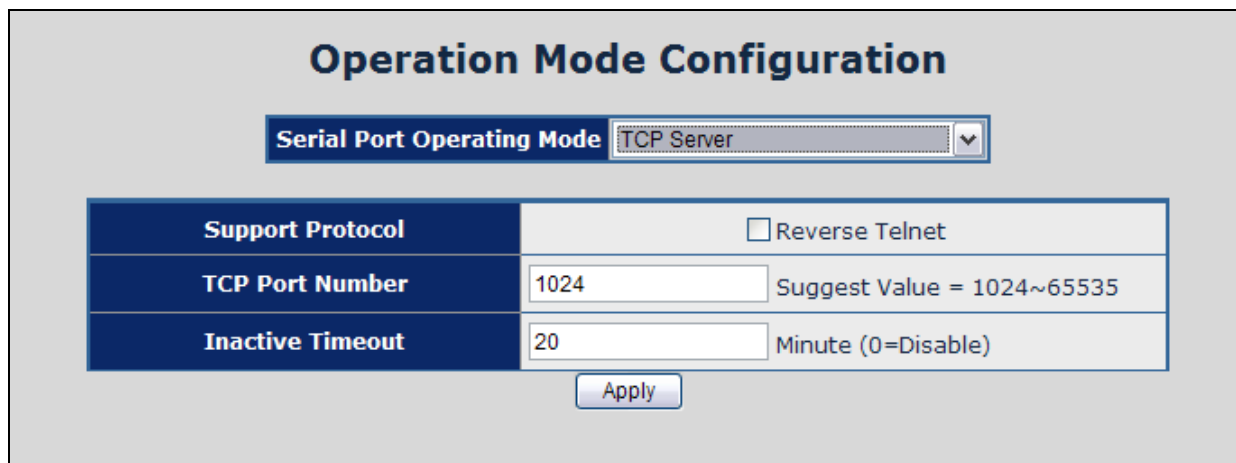


Figure 4-14 TCP Server Configuration screen

The page includes the following fields:

<p>• Serial Port Operation Mode</p>	<p>Choose different mode:</p> <ul style="list-style-type: none"> ■ TCP Server ■ TCP Client ■ UDP Client ■ Virtual COM ■ Telnet Server ■ Pair Connection - Local(Master) ■ Pair Connection - Remote(Slave) <p>The default mode is "Disable".</p>
<p>• TCP Port Number</p>	<p>The TCP port that ICS-210x uses to listen the connections and that other device must use to contact ICS-210x. To avoid conflicts with well known TCP ports, the default is set to "1024".</p>
<p>• Inactive Timeout</p>	<p>Use the parameter to set an inactive timeout. The unit drops the connection if there is no activity on the serial line before the set time expires. To disable the inactive timeout enter "0".</p>

Example: Use Microsoft Windows Hyper Terminal, TCP/IP Winsock mode

HyperTerminal is a program that you can use to connect to other computers, Telnet sites, online services, and host computers, using your modem, a null modem cable, a Console cable or Ethernet connection.

The users want to use the TCP Server mode to connect to an Ethernet Switch via Hyper Terminal, Winsock mode

1. **Setup Operation Mode and Serial Port of ICS-210x**
2. **Hyper Terminal set up a new connection with the TCP/IP Winsock**

Setup Operation Mode and Serial Port of ICS-210x

1. From the WEB interface, set the Serial operation mode of ICS-210x to "TCP Server" and set the TCP Port Number to "23".

Operation Mode Configuration	
Serial Port Operating Mode: TCP Server	
Support Protocol	<input type="checkbox"/> Reverse Telnet
TCP Port Number	23 Suggest Value = 1024~65535
Inactive Timeout	20 *5 Second (Max:259200,0=Disable)
Apply	

Figure 4-15 Example: TCP Server Configuration screen

2. Set the Serial Port Configuration of ICS-210x as below:

Mode:	RS-232
Baudrate:	9600
Character Bits:	8
Parity Type :	none
Stop Bit :	1
Hardware Flow Control:	none

Serial Port Configuration

Item	Setting
Mode	RS232
Baudrate	9600
Character Bits	8
Parity Type	none
Stop Bit	1
Hardware Flow Control	none
Uart Memory Overflow Count	0M,0K,0Byte
Uart FIFO Overflow Count	0 Times
Delimiter	<input type="checkbox"/> Character 1: C8 <input type="checkbox"/> Character 2: B5 <input type="checkbox"/> Silent time: 102 sec <input type="checkbox"/> Drop Character

Figure 4-16 Example: Serial Port Configuration screen

Hyper Terminal setup a new connection with TCP/IP Winsock

3. Open HyperTerminal

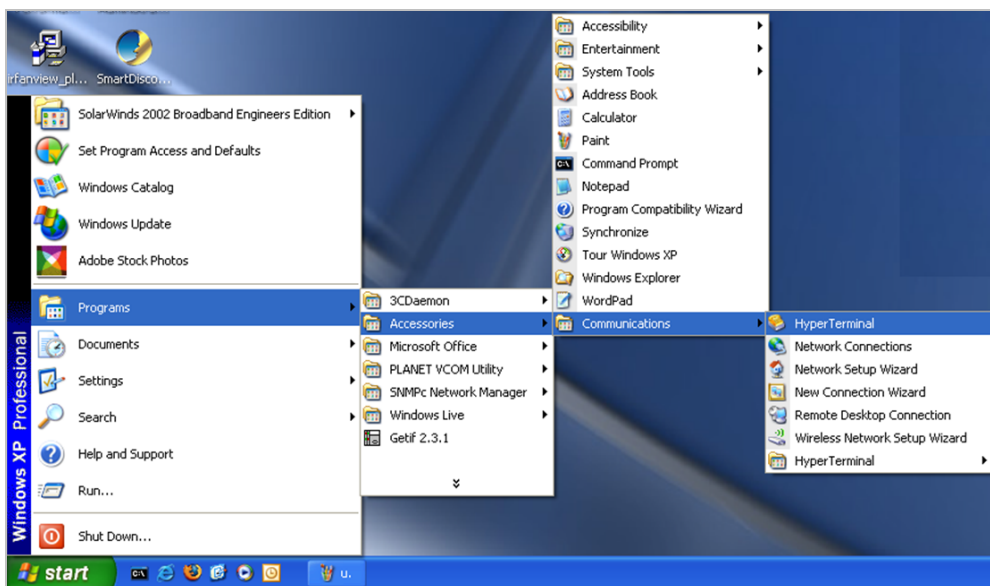


Figure 4-17 Example: Hyper Terminal screen

4. On the File menu, click **New Connection**.
5. In the Name box, type a name that describes the connection.
6. In the Icon box, click the appropriate icon, and then click OK.

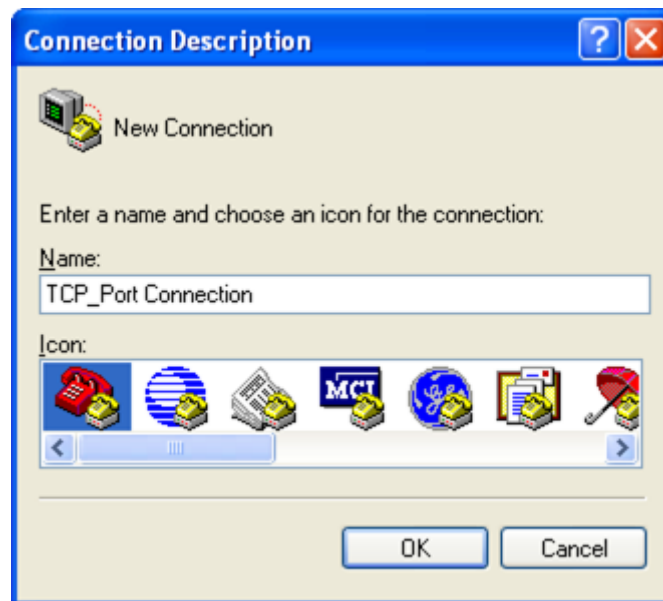


Figure 4-18 Example: Hyper Terminal – Create new connection

7. In the Connect To dialog box, choose which COM port or modem you want to use in the Connect using drop-down box.



Figure 4-19 Example: Hyper Terminal – Connect type

8. In this case we are connecting via TCP/IP (Winsock), enter the host address and port number, and then click OK.
9. If the Port Settings dialog box is displayed, complete the information, and click OK.

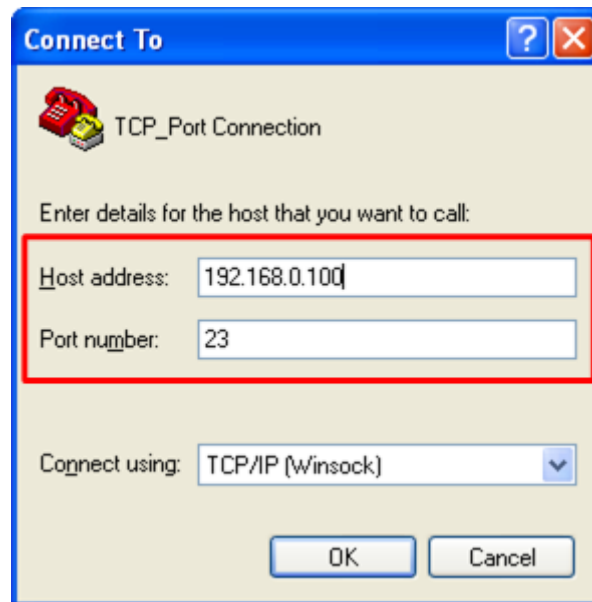


Figure 4-20 Example: Hyper Terminal configuration

Value	Description
Host address	The address or name of the connection you want to create. This can be in standard Internet dotted notation (for example, w.x.y.z) or can be the site's user-friendly name.
port	The number of the port that you want the connection to use. Port 23 is the default.

10. Then can use the console like connect the serial cable with the switch.

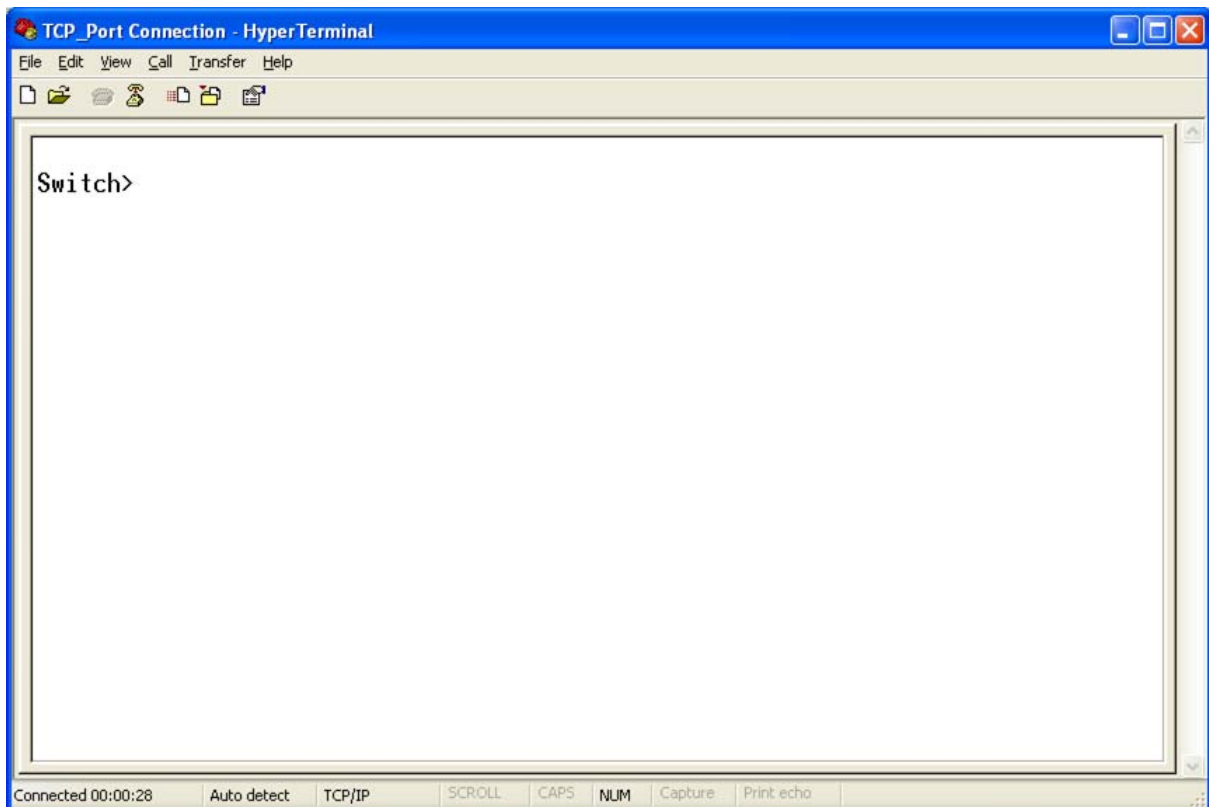


Figure 4-21 TCP/IP Winsock connection screen

4.4.2 TCP Client Mode

When the ICS-210x be configured to **TCP Client** mode, it allows Serial device that connected to serial port of ICS-210x to establish TCP communication **actively** over Intranet or Internet network between:

- Remote Host (Computer) with Serial applications using TCP/IP network socket programs
- Other ICS-210x with **TCP Server** mode

After the data has been transferred, the ICS-210x can disconnect automatically from the Remote Host depends on the TCP Inactive timeout settings. The parameter defines the maintenance status for listen for the TCP connection.

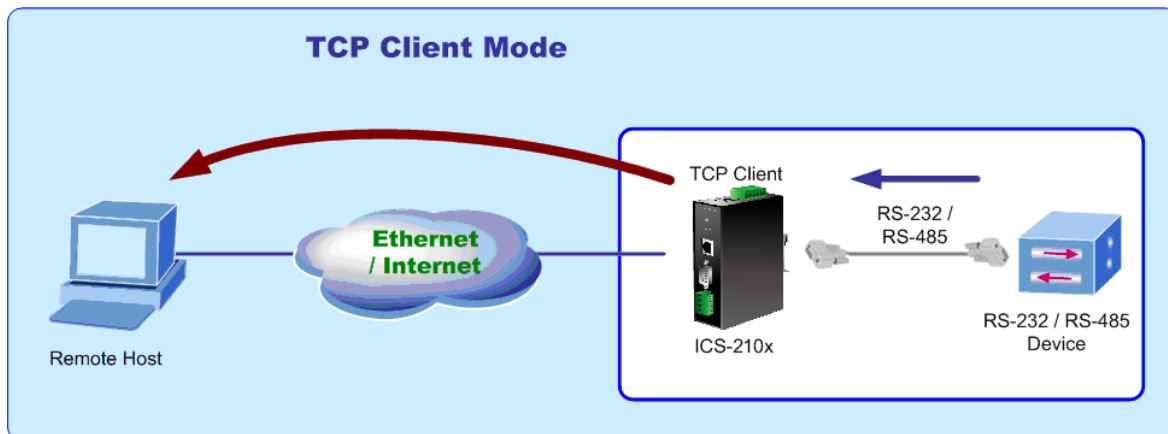


Figure 4-22 TCP Client mode

The screen in Figure 4-22 appears. When the changed operation mode, the user should be changed the Serial Port Configuration.

The screenshot shows the "Operation Mode Configuration" window. At the top, "Serial Port Operating Mode" is set to "TCP Client" in a dropdown menu. Below this are three configuration fields:

- Remote Host IP Address:** Four input boxes, each containing "0".
- Remote Host Port Number:** An input box containing "1024" and a note "Suggest Value = 1024~65535".
- Inactive Timeout:** An input box containing "20" and a note "*5 Second (Max:259200,0=Disable)".

An "Apply" button is located at the bottom center of the configuration area.

Figure 4-23 TCP Client Configuration screen

The page includes the following fields:

<ul style="list-style-type: none"> • Remote Host IP Address 	Allow the ICS-210x to connect actively to the remote host whose IP address is set by this parameter.
<ul style="list-style-type: none"> • Remote Host Port Number 	The remote host port number that ICS-210x uses to listen to connections and that other device must use to contact ICS-210x. To avoid conflicts with well known TCP ports, the default is set to "1024".
<ul style="list-style-type: none"> • Inactive Timeout 	Use the parameter to set an inactive timeout. The unit drops the connection if there is no activity on the serial line before the set time expires. To disable the inactive timeout enter "0".

4.4.3 UDP Client Mode

When the ICS-210x be configured to **UDP Client** mode, it allows Serial device that connected to serial port of ICS-210x to quickly transmit data to **multiple Remote Hosts** over Intranet or Internet network by unicast or multicast. It also makes the Serial device to receive data from more than one Remote Hosts.

The parameter defines the maintenance status for listen for the UDP connection. In UDP Client mode, you need to define the remote IP Address and Local listen port number.

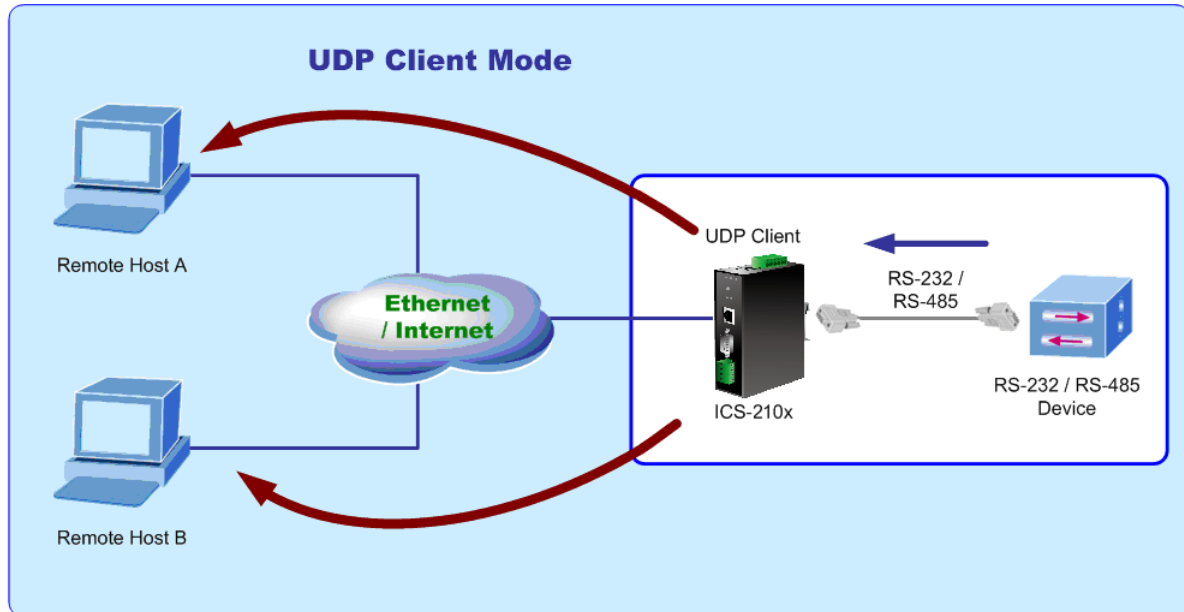


Figure 4-24 UDP Client mode

The screen in Figure 4-25 appears. When the changed operation mode, the user should be changed the Serial Port Configuration.

Operation Mode Configuration

Serial Port Operating Mode: UDP Client

Local UDP Port	21	(1~65535)
Remote Address	192 . 168 . 2 . 2	21
	0 . 0 . 0 . 0	0
	0 . 0 . 0 . 0	0
	0 . 0 . 0 . 0	0
	0 . 0 . 0 . 0	0
	0 . 0 . 0 . 0	0
	0 . 0 . 0 . 0	0
	0 . 0 . 0 . 0	0
	0 . 0 . 0 . 0	0
	0 . 0 . 0 . 0	0

Figure 4-25 UDP Client Configuration screen

The page includes the following fields:

• Local UDP Port	Enter the local port number
• Remote Address	Enter the IP address of the remote device.
• Remote Port	Enter the remote port number of the remote device.

4.4.4 Virtual COM Mode

When the ICS-210x be configured to **Virtual COM** mode, it allows Serial device that connected to serial port of ICS-210x to establish TCP communication over Intranet or Internet network between Remote Host (Computer). The Virtual COM Port driver has to be installed at the Remote Host. Users can send data by Virtual COM port, and Virtual COM port will transfer data to Ethernet by windows socket. The Virtual COM driver maps IP Address / Port of ICS-210x to a local COM port on the Remote Host (Computer). Once the Virtual COM connection is established, the applications work as the serial device is direct connected to the Remote Host's real COM port. After the connection is established, data can be transmitted in both directions.

With connect to ICS-210x Serial over Fast Ethernet Converter, the serial devices are not limited to physical connection to the PC/Remote Host COM port and able to be extension over longer distance. The parameter defines the maintenance status for the Virtual COM.

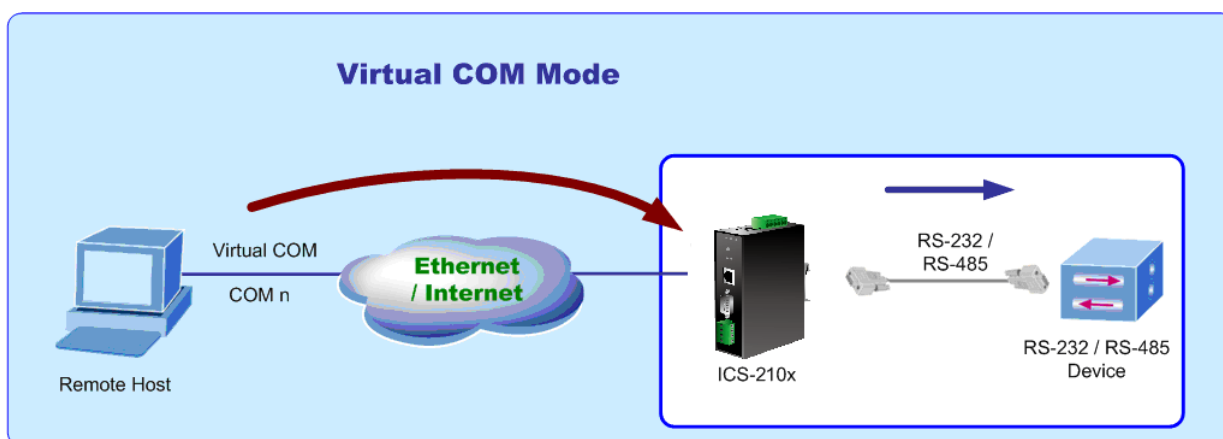


Figure 4-26 Virtual COM mode

When the changed operation mode, the user should be changed the Serial Port Configuration. The screen in Figure 4-27 appears.

Operation Mode Configuration

Serial Port Operating Mode Virtual COM

Support Protocol	<input type="checkbox"/> Reverse Telnet
Telnet Port Number	<input style="width: 100%;" type="text" value="1024"/> Suggest Value = 1024~65535
Inactive Timeout	<input style="width: 100%;" type="text" value="20"/> *5 Second (Max:259200,0=Disable)

Figure 4-27 Virtual COM Configuration screen

The page includes the following fields:

<ul style="list-style-type: none"> • TCP Port Number 	<p>The TCP port that ICS-210x uses to listen the connections and that other device must use to contact ICS-210x. To avoid conflicts with well known TCP ports, the default is set to “1024”.</p>
<ul style="list-style-type: none"> • Inactive Timeout 	<p>Use the parameter to set an inactive timeout. The unit drops the connection if there is no activity on the serial line before the set time expires. To disable the inactive timeout enter “0”.</p>

Example: Use PLANET VCOM Utility + Microsoft Windows Hyper terminal COM Port mode

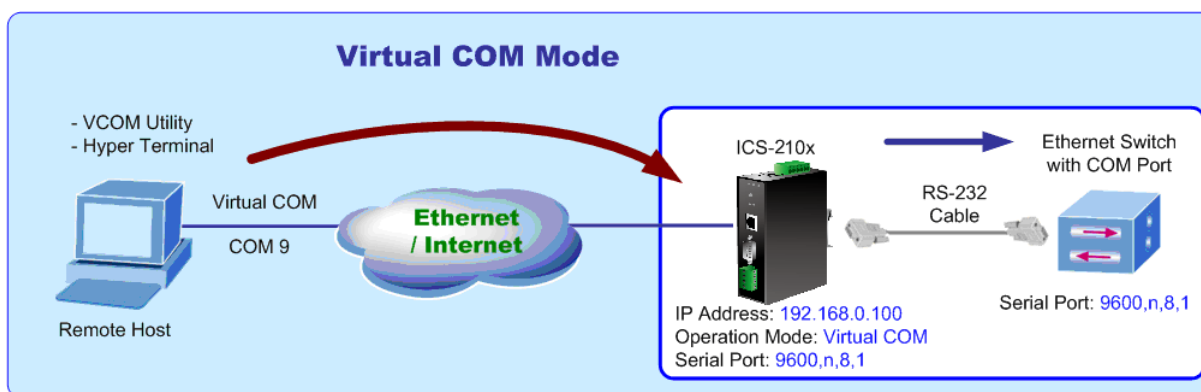


Figure 4-28 Virtual COM mode

The user want to use the virtual COM like to use the serial cable connect the switch.

1. **Setup Operation Mode and Serial Port of ICS-210x**
2. **Use PLANET VCOM Utility to create virtual COM Port**
3. **Hyper Terminal set up a new connection with the virtual COM port**

Setup Operation Mode and Serial Port of ICS-210x

1. From the WEB interface, set the Serial operation mode of ICS-210x to “**Virtual COM**” and set the Telnet Port Number to “1024”.

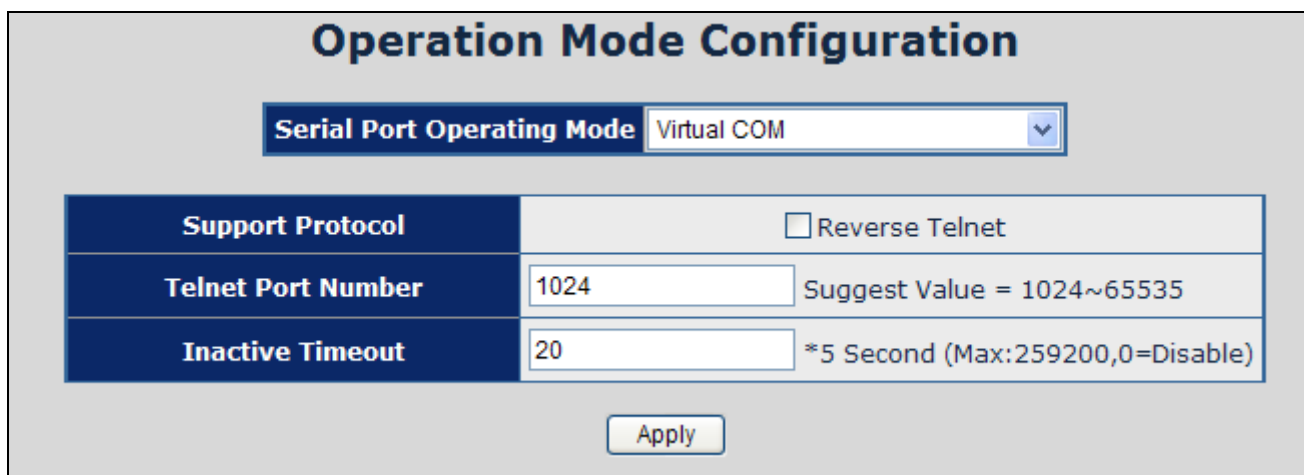


Figure 4-29 Example: Virtual COM Configuration screen

2. Set the Serial Port Configuration of ICS-210x as below:

Mode:	RS-232
Baudrate:	9600
Character Bits:	8
Parity Type :	none
Stop Bit :	1
Hardware Flow Control:	none

Serial Port Configuration

Item	Setting
Mode	RS232 ▼
Baudrate	9600 ▼
Character Bits	8 ▼
Parity Type	none ▼
Stop Bit	1 ▼
Hardware Flow Control	none ▼
Uart Memory Overflow Count	0M,0K,0Byte
Uart FIFO Overflow Count	0 Times
Delimiter	<input type="checkbox"/> Character 1: C8 <input type="checkbox"/> Character 2: B5 <input type="checkbox"/> Silent time: 102 sec <input type="checkbox"/> Drop Character

Figure 4-30 Example: Serial Port Configuration screen

VCOM Utility to create virtual COM port

- This mode will run with the software-"PLANET VCOM Utility". Open the VCOM utility; click "Search" button to point out the ICS-210x that want to be configured.

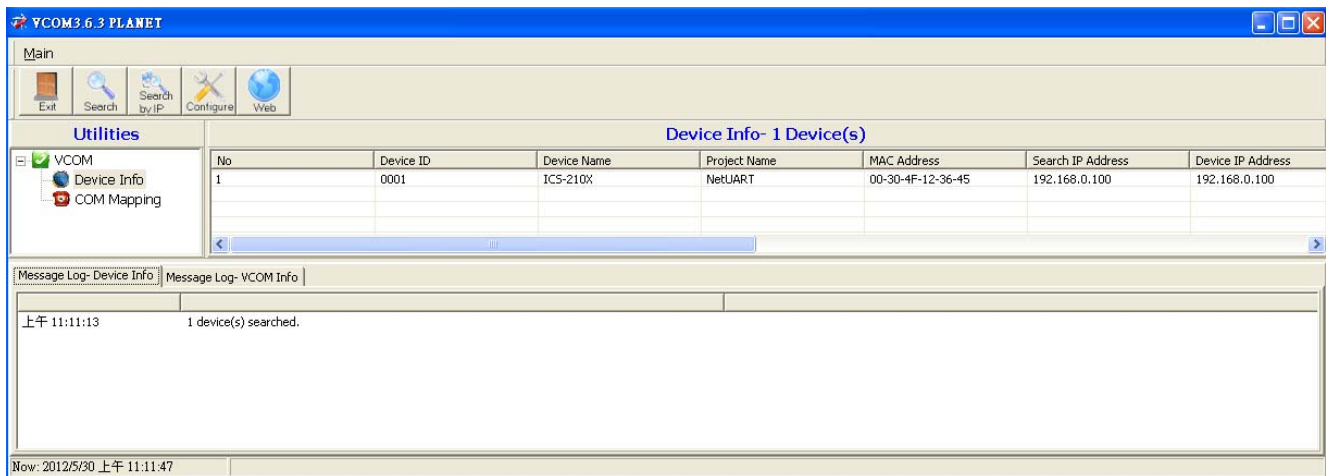
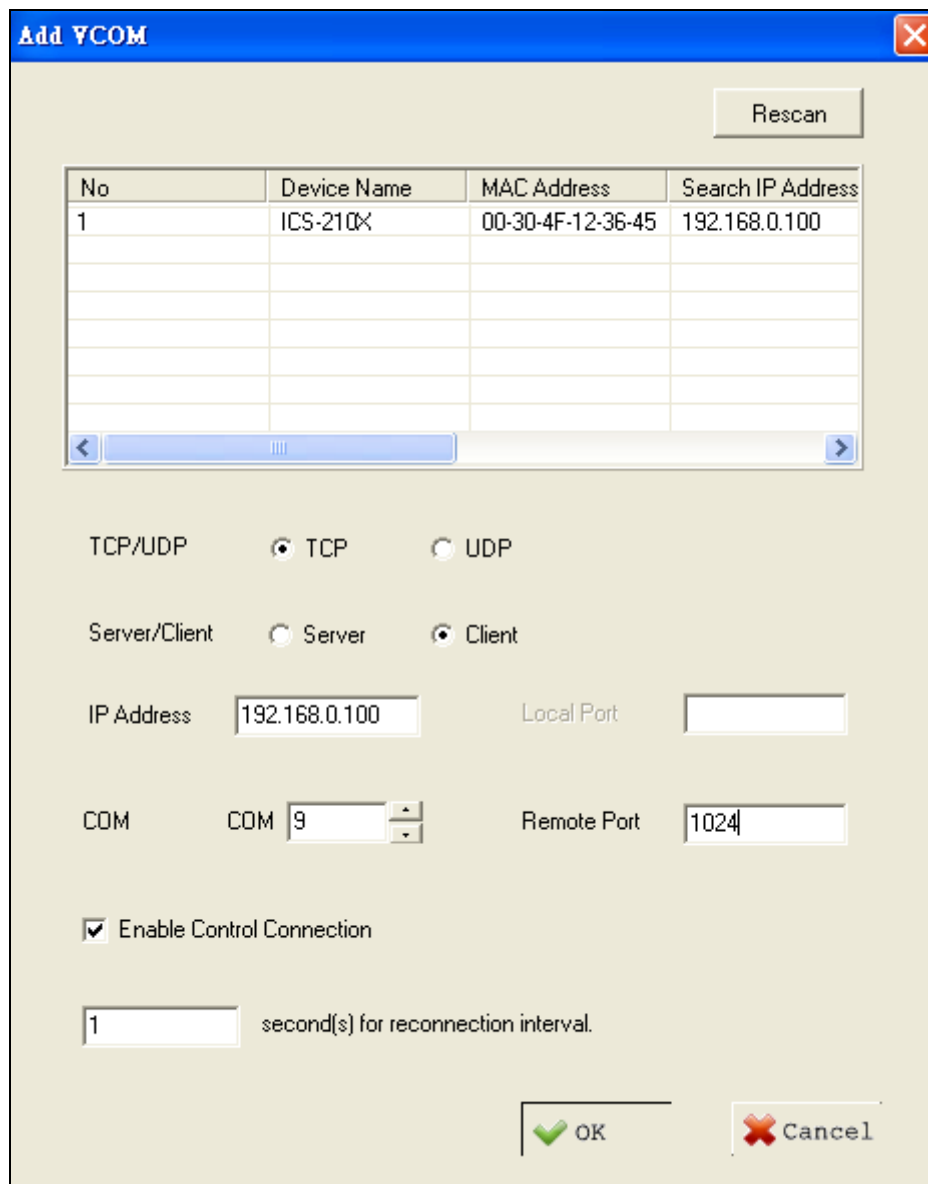


Figure 4-31 Example: Virtual COM Configuration screen

- Choose the COM Mapping and add **COM 9** like below:



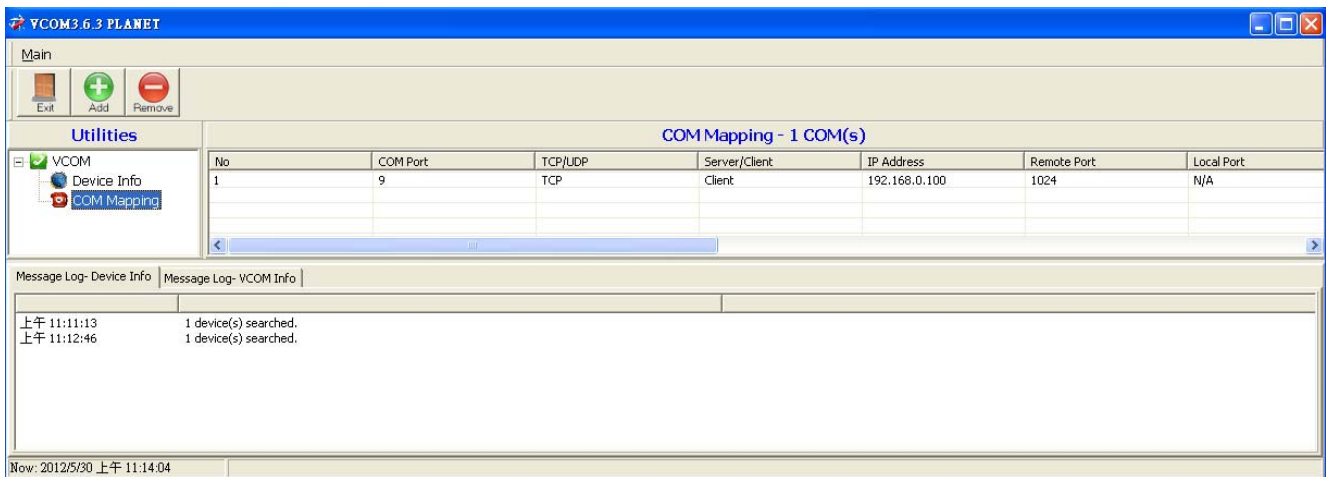


Figure 4-32 Example: Virtual COM Configuration screen

Hyper Terminal setup a new connection with virtual COM port

5. On the File menu, click New Connection.
6. In the Name box, type a name that describes the connection.
7. In the Icon box, click the appropriate icon, and then click OK.



Figure 4-33 Example: HyperTerminal Configuration screen

- In the Connect to dialog box, choose which port you want to use in the Connect using drop-down box. In this case, choose COM9 (as created in Step-4)



Figure 4-34 Example: HyperTerminal Configuration screen

- Set the parameter like below, click "Apply" to take effect.

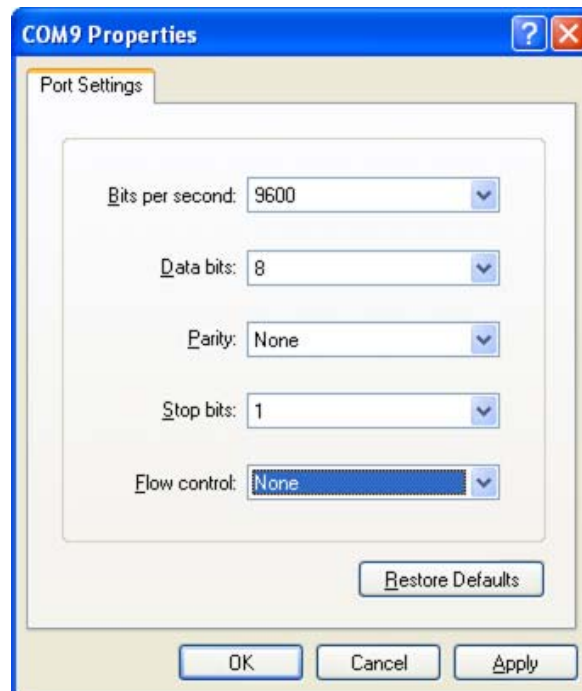


Figure 4-35 Example: HyperTerminal COM port properties screen

10. After the Virtual COM connection is established, open the VCOM utility again to check the COM9 information.

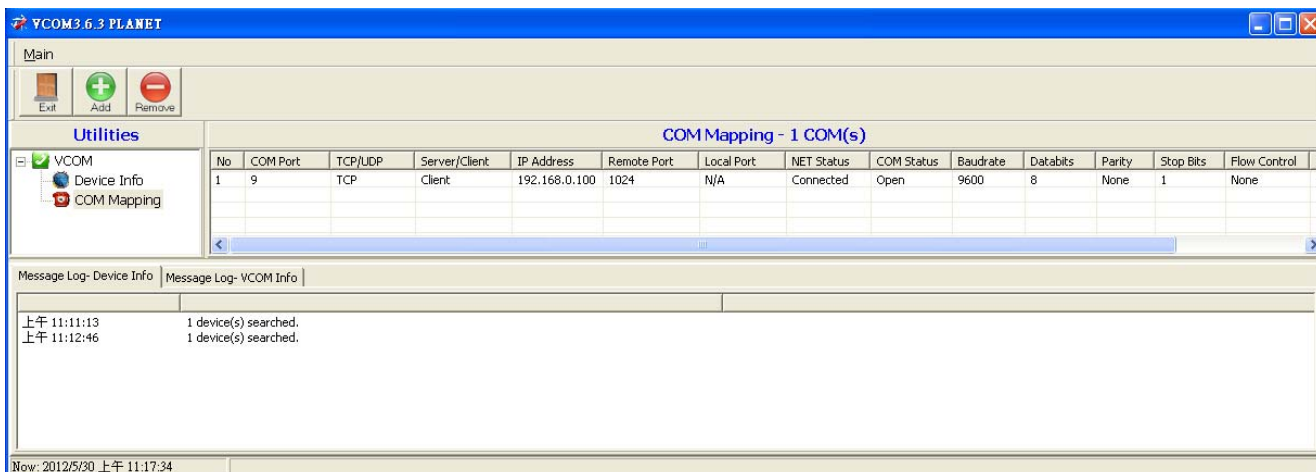


Figure 4-36 Example: VCOM Utility, COM9 information

11. Then can use the console like connect the serial cable with the switch.

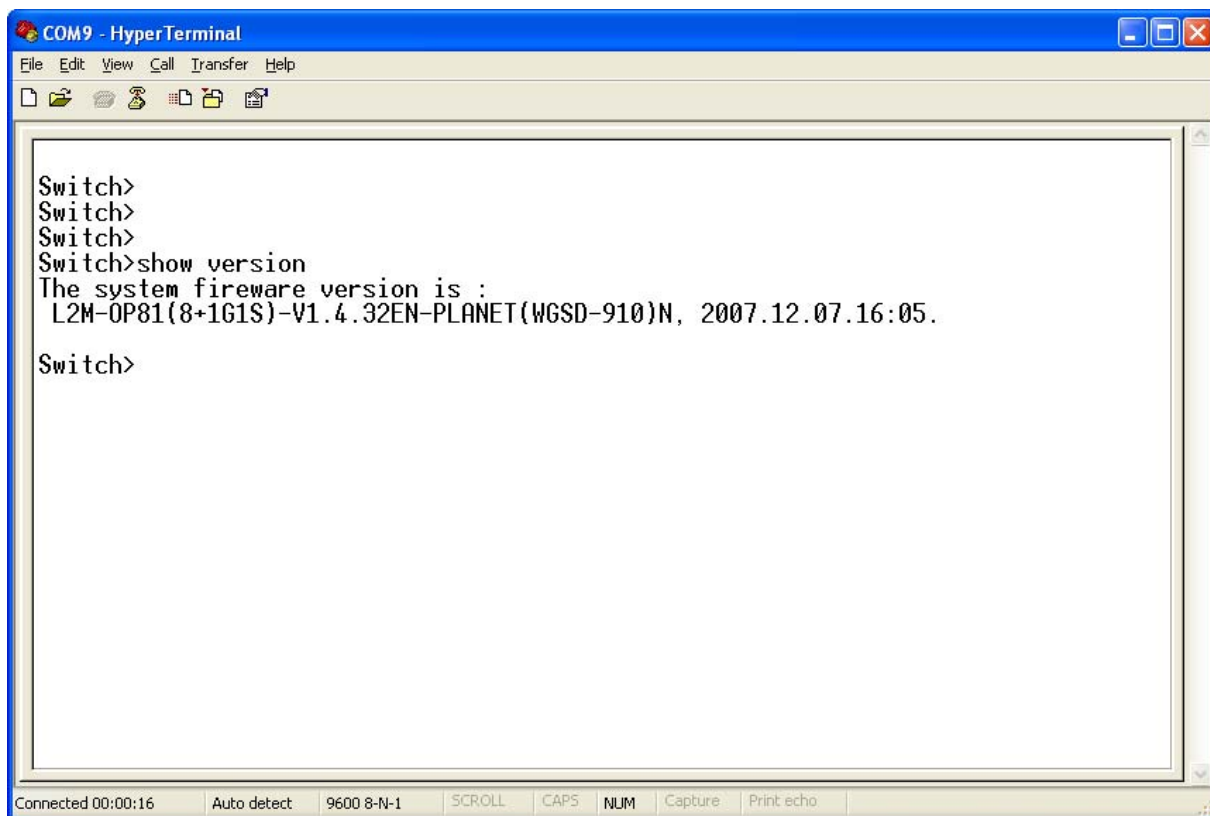


Figure 4-37 Example: Hyper Terminal COM port screen

4.4.5 Telnet Server Mode

TELNET (TELEcommunication NETwork) is a network protocol used on the Internet or local area network (LAN) connections. The Telnet protocol type is the correct setting for most servers and serial devices, such as Managed Ethernet switches or Gateways. In most of the case, the telnet use TCP port 23 as communication port.

The parameter defines the maintenance status for Telnet server.

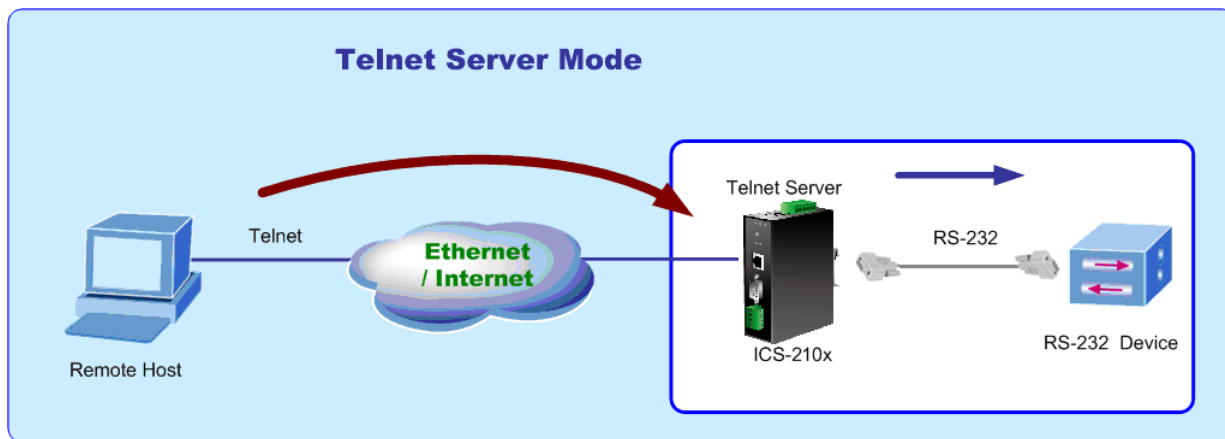


Figure 4-38 COM port screen

When the changed operation mode, the user should be changed the Serial Port Configuration. The screen in Figure 4-39 appears.

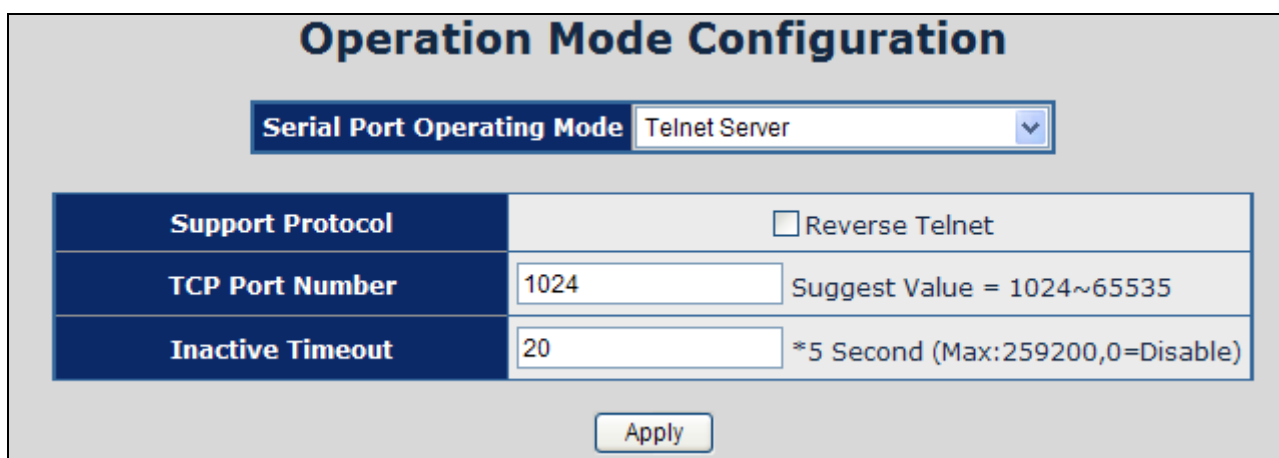


Figure 4-39 Telnet Server Configuration screen

The page includes the following fields:

<ul style="list-style-type: none"> • TCP Port Number 	<p>The TCP port that ICS-210x uses to listen the connections and that other device must use to contact ICS-210x. To avoid conflicts with well known TCP ports, the default is set to “1024”.</p>
<ul style="list-style-type: none"> • Inactive Timeout 	<p>Use the parameter to set an inactive timeout. The unit drops the connection if there is no activity on the serial line before the set time expires. To disable the inactive timeout enter “0”.</p>



The ICS-210x’s “telnet server mode”--if the user used the MS-DOS telnet command it will show double character. So the user can use other Telnet software like: “putty” or “NetTerm”.

Example 1: Telnet Command in Windows Platform

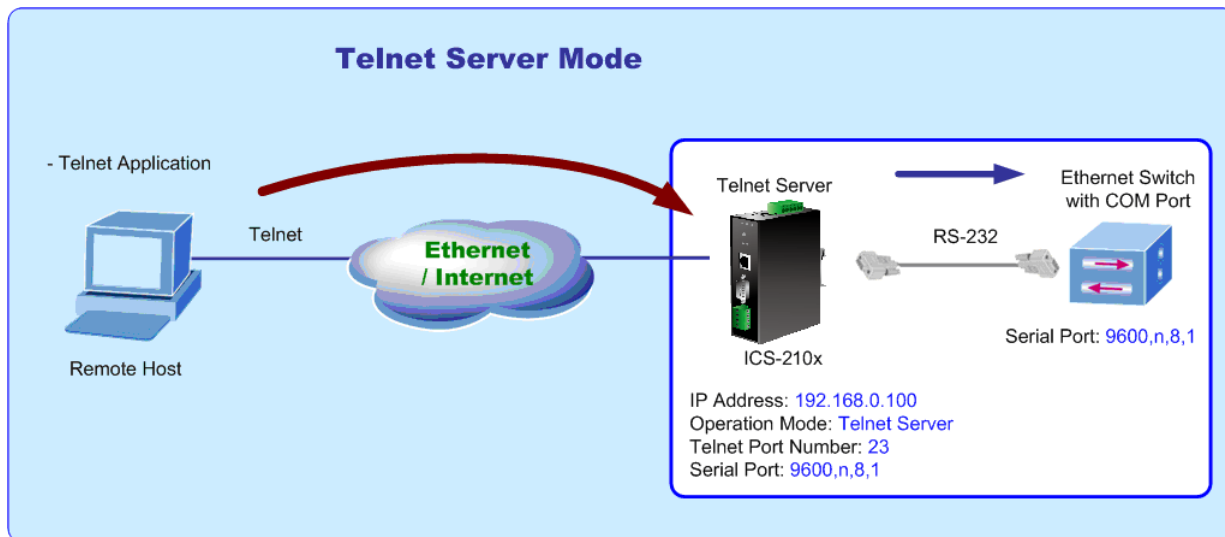


Figure 4-40 Example Telnet Server

Setup Operation Mode and Serial Port of ICS-210x

1. Set the ICS-210x mode to “Telnet server mode” from web interface.
2. Set the Serial Port Configuration of ICS-210x as below:

Mode:	RS-232
Baudrate:	9600
Character Bits:	8
Parity Type :	none
Stop Bit :	1
Hardware Flow Control:	none

Execute “Telnet” command from Windows Start Menu

3. Click the **Start Menu** and go to **Run**
4. Type "telnet" without the quotes and hit enter.

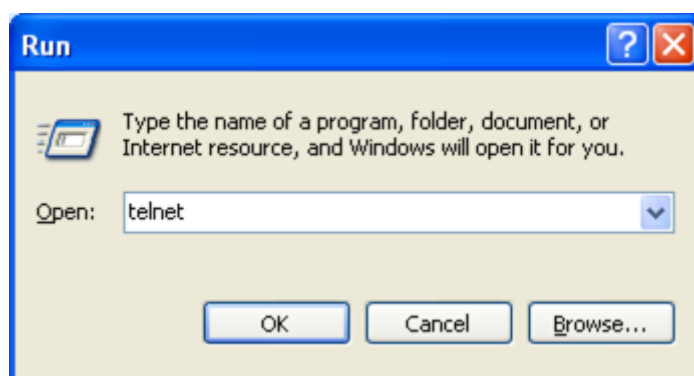
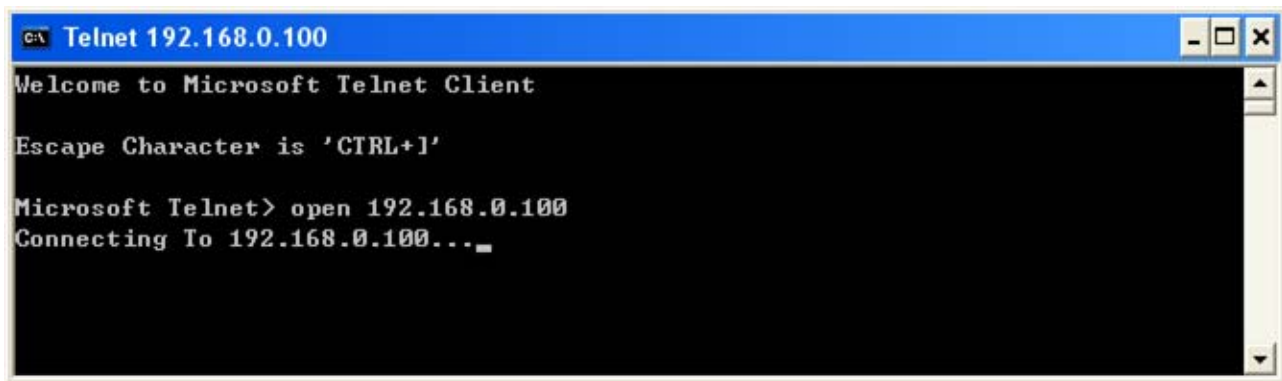


Figure 4-41 Example Windows Excuse - Telnet

5. The Telnet window appears, type “open xxx,xxx,xxx,xxx”, xxx is the IP address of the ICS-210x Telnet Server. In this case we type “open 192.168.0.100” and press enter.



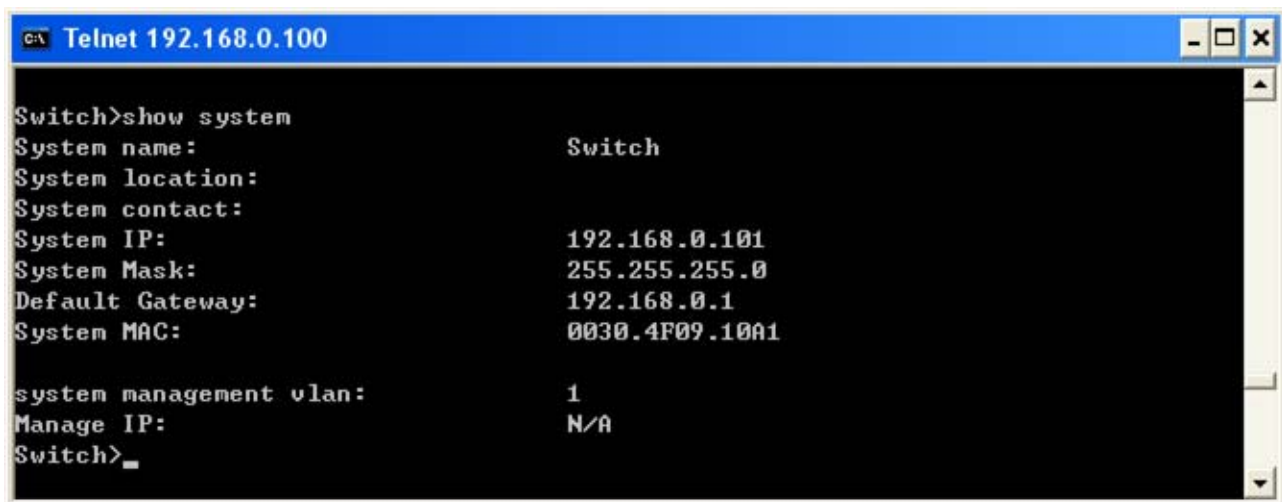
```
C:\> Telnet 192.168.0.100
Welcome to Microsoft Telnet Client

Escape Character is 'CTRL+]'

Microsoft Telnet> open 192.168.0.100
Connecting To 192.168.0.100...
```

Figure 4-42 Example Windows Excuse - Telnet

6. Then can use the telnet connection to configure the switch just like console direct connect to the COM port of the switch.

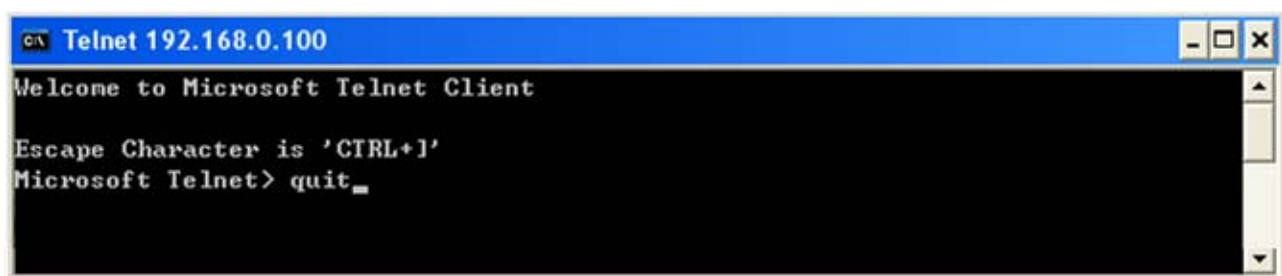


```
C:\> Telnet 192.168.0.100
Switch>show system
System name:                Switch
System location:
System contact:
System IP:                   192.168.0.101
System Mask:                 255.255.255.0
Default Gateway:            192.168.0.1
System MAC:                  0030.4F09.10A1

system management vlan:     1
Manage IP:                  N/A
Switch>
```

Figure 4-43 Example Windows Excuse - Telnet

7. To quit the Telnet session, press "CTRL +]" and then type "quit"



```
C:\> Telnet 192.168.0.100
Welcome to Microsoft Telnet Client

Escape Character is 'CTRL+]'
Microsoft Telnet> quit
```

Figure 4-44 Example Windows Excuse - Telnet

Example 2: PuTTY software in Windows Platform

PuTTY is a free implementation of Telnet and SSH for Win32 and Unix platforms, along with an xterm terminal emulator. In this case we use PuTTY to telnet the ICS-210x for remote console login.

1. Set the ICS-210x mode to “**Telnet server mode**” from web interface.
2. Run the Telnet software like “**PuTTY**” and set the parameter like below:

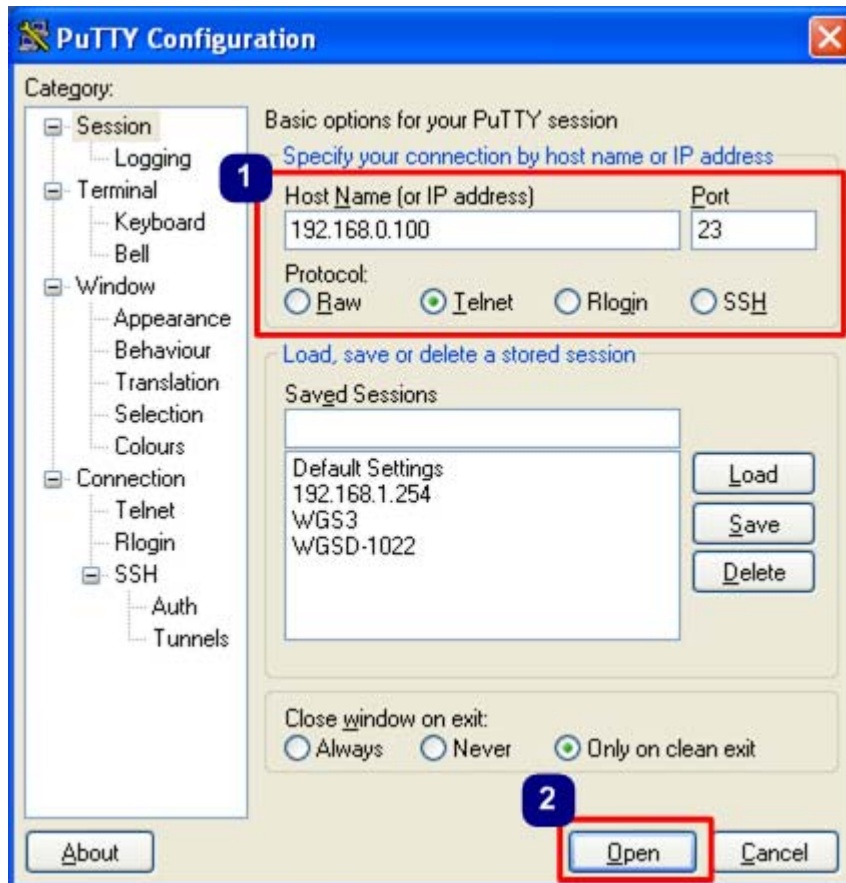


Figure 4-45 Putty Configuration screen

8. Then can telnet IP address like to telnet switch's IP.

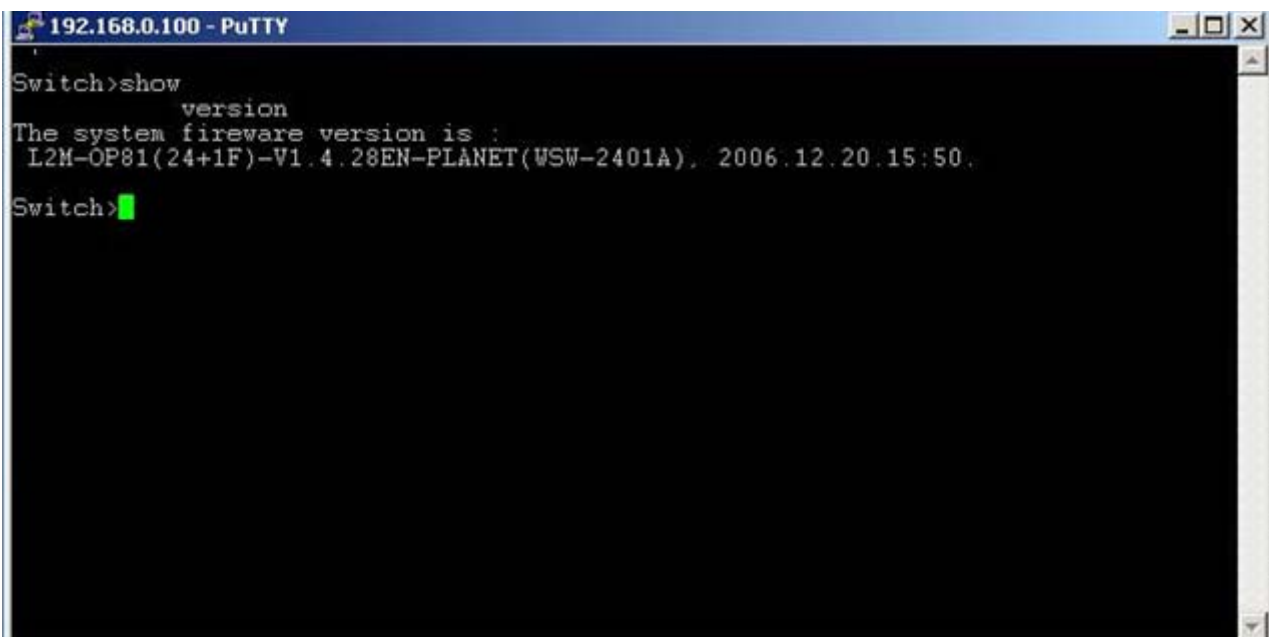


Figure 4-46 Putty telnet screen

4.4.6 Pair Connection– Local Mode

The parameter defines the maintenance status for the pair connection. To make a long distance communication between two serial equipment, configure two ICS-210x with Pair Connection mode, it needs to setup one as a Master (Local side) and the other as a Slave (Remote side).

- **Pair Connection – Local (Master)** – the ICS-210x is locate close to the Host Computer or control device and connects to it via serial interface.
- **Pair Connection – Remote (Slave)** – the ICS-210x is locate close to the remote serial equipment and connects to it via serial interface.

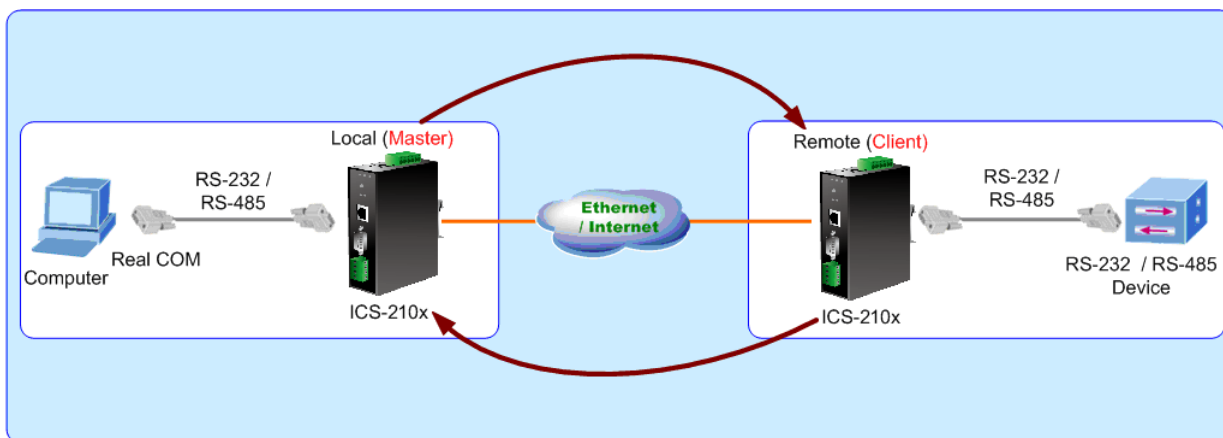


Figure 4-47 Pair Connection mode

In effect, this converter will be acting as a TCP server. The screen in Figure 4-48 appears. When changes operation mode, the user should also change the Serial Port Configuration.

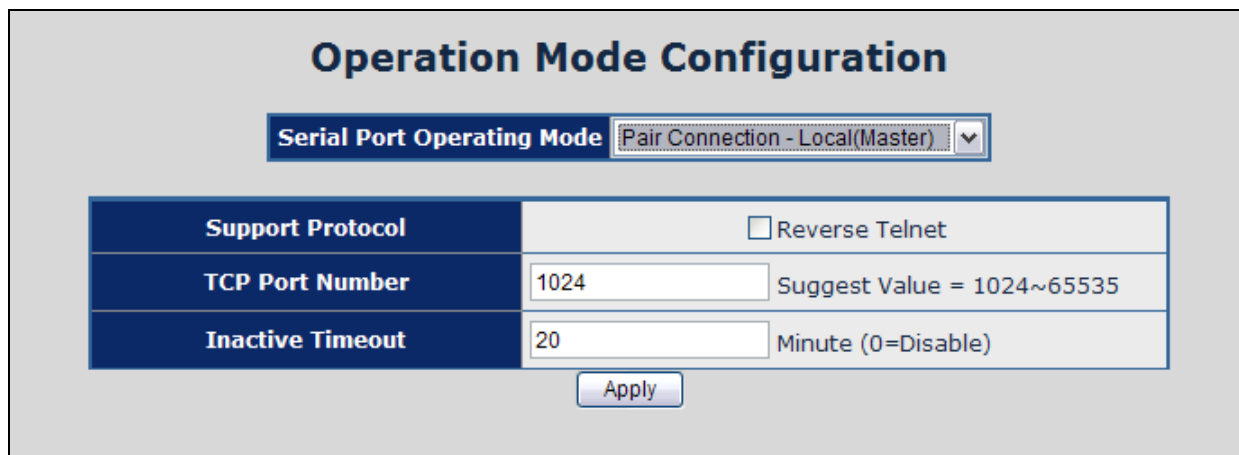


Figure 4-48 Pair Connection – Local (Master) Configuration screen

<ul style="list-style-type: none"> • TCP Port Number 	<p>The TCP port that ICS-210x uses to listen the connections and that other device must use to contact ICS-210x. To avoid conflicts with well known TCP ports, the default is set to “1024”.</p>
<ul style="list-style-type: none"> • Inactive Timeout 	<p>Use the parameter to set an inactive timeout. The unit drops the connection if there is no activity on the serial line before the set time expires. To disable the inactive timeout enter “0”.</p>

4.4.7 Pair Connection – Remote Mode

The parameter defines the maintenance status for listen the pair connection. In effect, this converter will be acting as a TCP client. The screen in Figure 4-49 appears.

When changes operation mode, the user should also change the Serial Port Configuration.

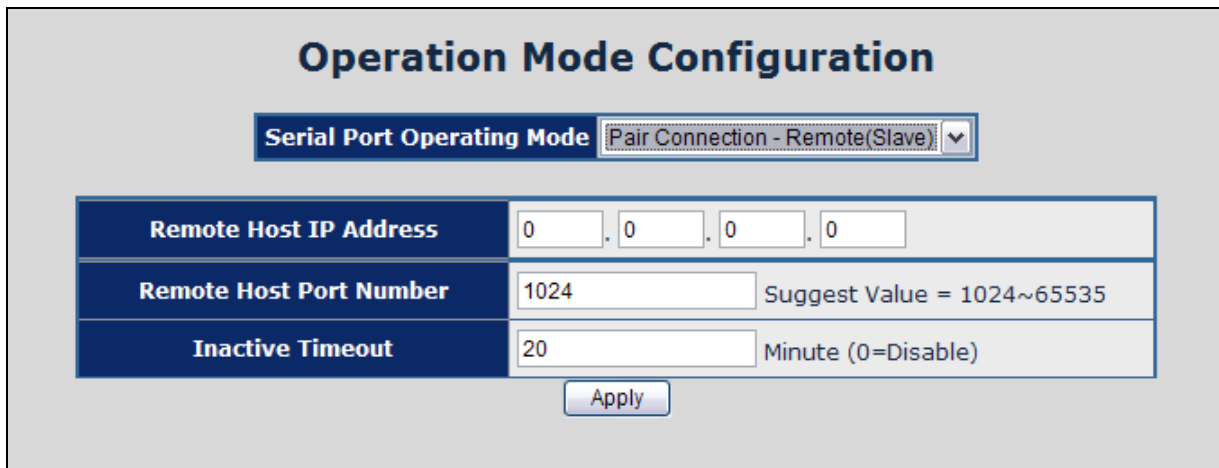


Figure 4-49 Pair Connection – Remote (Slave) Configuration screen

<ul style="list-style-type: none"> • Remote Host IP Address 	Allow the ICS-210x to connect actively to the remote host whose IP address is set by this parameter.
<ul style="list-style-type: none"> • Remote Host Port Number 	The TCP port that ICS-210x uses to listen to connections and that other device must use to contact ICS-210x. To avoid conflicts with well known TCP ports, the default is set to “1024”.
<ul style="list-style-type: none"> • Inactive Timeout 	Use the parameter to set an inactive timeout. The unit drops the connection if there is no activity on the serial line before the set time expires. To disable the inactive timeout enter “0”.

Important!

Using Pair Connection mode for two RS-232 services distance extend, the DB9/RS-232 cables are very importance in this application. There are much kind of RS-232 cables, such as **straight cable** (standard) and **Null-Modem cable**. Please make sure the DB9/RS-232 cables match the below constriction:

- **Serial Device to ICS-210x/Remote (Slave)** – Use the original RS-232 serial cable attached in the serial device package.
- **Host / Client to ICS-210x/Local (Master)** – It has to use the **Null-Modem cable!**

Users can use the Null-Modem cable directly connect to the ICS-210x (Master), or use the Null-Modem DB9 connector, as the picture shows:



Once the Pair Connection mode of two ICS-210x be correctly configured but still fail link, check the RS-232 cables!

Example: Two ICS-210x with Pair Connection mode
One be configured as Pair Connection – Local (Master)
The other one be configured as Pair Connection – Remote (Slave)

Via the RS-485 interface, the external scanners, speed dome cameras and PTZ receivers can be controlled by the control keyboard which provides upward, downward, leftward, rightward, clockwise and counterclockwise with the joystick. In this case, we use two ICS-210x to extend the distance between an IP surveillance PT Camera and a Control keyboard. Both of the two equipments are implemented with RS-485 interface.

The two of the ICS-210x master and slave with below settings:

ICS-210x Master	
Connect to	Control Keyboard
IP Address / Subnet Mask	192.168.0.100 / 255.255.255.0
Operation Mode	Mode: Pair Connection – Local TCP Port Number : 1024
Serial Port Configuration	Serial Mode: RS-485 Baudrate: 9600 Character Bits: 8 Parity Type : none Stop Bit : 1 Hardware Flow Control: none
ICS-210x Slave	
Connect to	Speed Dome Camera, PTZ or Scanner
IP Address / Subnet Mask	192.168.0.101 / 255.255.255.0
Operation Mode	Mode: Pair Connection – Remote Remote Host IP Address : 192.168.0.100 Remote Host Port Number : 1024
Serial Port Configuration	Serial Mode: RS-485 Baudrate: 9600 Character Bits: 8 Parity Type : none Stop Bit : 1 Hardware Flow Control: none

Topology:

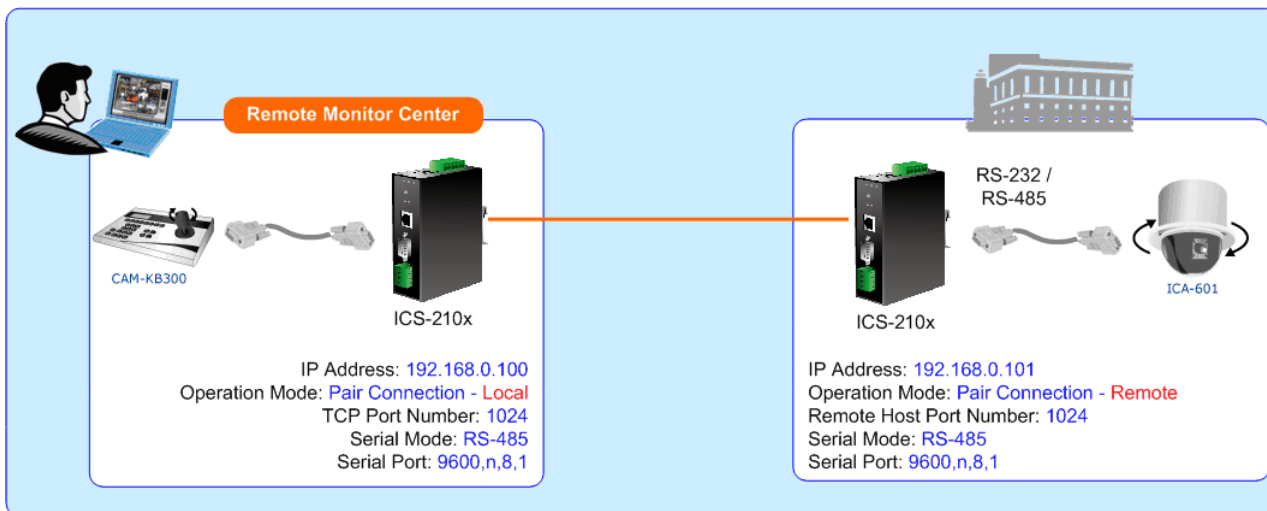


Figure 4-50 Two ICS-210x configured with Pair-Connection

1. Connect the converter with the IP camera for RS-485 interface like PLANET product: "ICA-601".
2. Connect the converter with the control keyboard for RS-485 interface like PLANET product: "CAM-KB300".

ICS-210x – Master: be configured as Pair-Connection-Local

3. From Web interface, login the ICS-210x with IP address = 192.168.0.100, set up the operation mode of this unit to be "Pair Connection-Local (Master)"

Operation Mode Configuration

Serial Port Operating Mode Pair Connection - Local(Master) ▼

Support Protocol	<input type="checkbox"/> Reverse Telnet
TCP Port Number	1024 Suggest Value = 1024~65535
Inactive Timeout	20 *5 Second (Max:259200,0=Disable)

Apply

Figure 4-51 Pair Connection – Local, operation mode configuration

4. Set the Serial Port mode of ICS-210x-Master to RS-485.

Serial Port Configuration

Item	Setting
Mode	RS485 ▼
Baudrate	9600 ▼
Character Bits	8 ▼
Parity Type	none ▼
Stop Bit	1 ▼
Hardware Flow Control	none ▼
Uart Memory Overflow Count	0M,0K,0Byte
Uart FIFO Overflow Count	0 Times
Delimiter	<input type="checkbox"/> Character 1: C8 <input type="checkbox"/> Character 2: B5 <input type="checkbox"/> Silent time: 102 sec <input type="checkbox"/> Drop Character

Update

Figure 4-52 Pair Connection – Local, serial port configuration

ICS-210x – Slave: be configured to Pair-Connection-Remote

- From Web interface, login the ICS-210x with IP address = 192.168.0.101, set up the operation mode of this unit to be “Pair Connection-Local (Slave)”

Operation Mode Configuration

Serial Port Operating Mode Pair Connection - Remote(Slave) ▼

Remote Host IP Address	0 . 0 . 0 . 0
Remote Host Port Number	1024 <small>Suggest Value = 1024~65535</small>
Inactive Timeout	20 <small>*5 Second (Max:259200,0=Disable)</small>

Figure 4-53 Pair Connection –Remote, operation mode configuration

- Set the Serial Port mode of ICS-210x-Slave to RS-485.

Serial Port Configuration

Item	Setting
Mode	RS485 ▼
Baudrate	9600 ▼
Character Bits	8 ▼
Parity Type	none ▼
Stop Bit	1 ▼
Hardware Flow Control	none ▼
Uart Memory Overflow Count	0M,0K,0Byte
Uart FIFO Overflow Count	0 Times
Delimiter	<input type="checkbox"/> Character 1: C8
	<input type="checkbox"/> Character 2: B5
	<input type="checkbox"/> Silent time: 102 sec
	<input type="checkbox"/> Drop Character

Figure 4-54 Pair Connection – Local, serial port configuration

- Then the control keyboard can remote control the IP camera.

4.5 Serial Port Configuration

The page shows the converter's serial Port configuration. The screen in Figure 4-55 appears.

Serial Port Configuration

Item	Setting
Mode	RS232 ▼
Baudrate	9600 ▼
Character Bits	8 ▼
Parity Type	none ▼
Stop Bit	1 ▼
Hardware Flow Control	none ▼
Uart Memory Overflow Count	0M,0K,0Byte
Uart FIFO Overflow Count	0 Times
Delimiter	<input type="checkbox"/> Character 1: C8 <input type="checkbox"/> Character 2: B5 <input type="checkbox"/> Silent time: 102 sec <input type="checkbox"/> Drop Character

Figure 4-55 Serial Port Configuration page screen

The page includes the following fields:

<ul style="list-style-type: none"> • Mode 	<p>From the drop-down menu, select the serial port mode:</p> <ul style="list-style-type: none"> ■ RS-232 ■ RS-422 ■ RS-485
<ul style="list-style-type: none"> • Baudrate 	<p>The unit and attached serial device, such as a modem, must agree on a speed or baud rate to use for the serial connection, Valid baud rates. It's in the range of 300bps to 230400bps.</p>
<ul style="list-style-type: none"> • Character Bits 	<p>Indicates the number of the bits in a transmitted data package. The allowed value is 5,6,7,8</p> <p>The default is "8".</p>
<ul style="list-style-type: none"> • Parity Type 	<p>Checks for the parity type. The default value is "none".</p>
<ul style="list-style-type: none"> • Stop Bit 	<p>The stop bit follows the data and parity bits in serial communication. It indicates the end of transmission. The default is "1".</p>
<ul style="list-style-type: none"> • Hardware Flow Control 	<p>Flow control manages data flow between devices in a network to ensure it is processed efficiently. Too much data arriving before a device is prepared to manage it causes lost or retransmitted data.</p>

	<p>none, HW</p> <p>The default value is “none”.</p>
<ul style="list-style-type: none">• Delimiter	<p>Character The Character 1 and Character 2 allow the use to enter two ASCII character (in hex format) that delimit the beginning and end of a message. When a message with both there delimiters is received at the serial port, the data contained in the serial buffer is paced in an Ethernet packet and sent out the Ethernet port.</p> <p>Silent Time: For the defined period of time passed, the serial port stops data transmission and close the connection to remote host.</p> <p>Drop Character: If the incoming data contain character 1 or character 2, the packet will be dropped</p> <p>The default value is “Disable”</p>

4.6 SMTP

The page shows SMTP configuration. The screen in Figure 4-56 appears. You may setup SMTP mail parameters for further operation. That's, if users want to send the alarm message out that contains "Log-Fail Warning", "OP Change Warning" and "Reboot Warning", it will need to configure parameters here.

SMTP setup

Enable SMTP	<input type="checkbox"/> Enable
SMTP Port	25
SMTP Server Address	
SMTP Login Information	<input type="checkbox"/> Enable Username: <input type="text"/> Password: <input type="text"/>
Mail to	<input type="text"/> max: 200
Mail from	<input type="text"/>

Log-Fail Warning

Subject	[[ICS-210x]Login Fail Warning]
Message Body	ICS-210X web Login Fail. max: 100

OP Change Warning

Subject	[[ICS-210x]Operation Mode Change Warning]
Message Body	ICS-210X Operation Mode Change. max: 100

Reboot Warning

Subject	[[ICS-210x]Device Reboot Warning]
Message Body	ICS-210X Device Reboot. max: 100

Figure 4-56 SMTP page screen

The page includes the following fields:

SMTP Setup		
• Enable SMTP	To Enable SMTP function. The default value is “Disable”.	
• SMTP Port	Set port number of SMTP service. The default number is “25”.	
• SMTP Server Address	Type the SMTP server name or the IP address of the SMTP server address.	
• SMTP Login Information	Enable	If authentication is required when an e-mail is sent
	Username	Enter your login name for the SMTP Server.
	Password	Enter your password for the SMTP Server.
• Mail to	Enter the receiver's e-mail address.	
• Mail from	Enter the sender's e-mail address. This address is used for reply e-mails.	
Log-Fail Warning		
• Subject	Enter the subject/title of the e-mail. The default subject is “[ICS-210x]Login Fail Warning”.	
• Message Body	Enter the message of the e-mail. The default subject is “ICS-210x web Login Fail.”.	
OP Change Warning		
• Subject	Enter the subject/title of the e-mail. The default subject is “[ICS-210x]Operation Mode Change Warning”.	
• Message Body	Enter the message of the e-mail. The default subject is “ICS-210x Operation Mode Change.”.	
Reboot Warning		
• Subject	Enter the subject/title of the e-mail. The default subject is “[ICS-210x]Device Reboot Warning”.	
• Message Body	Enter the message of the e-mail. The default subject is “ICS-210x Device Reboot.”.	

■ Logout

Press this function; the web interface will go back to login screen. The screens in Figure 4-57 and Figure 4-58 appear.



Figure 4-57 Logout dialogues screen

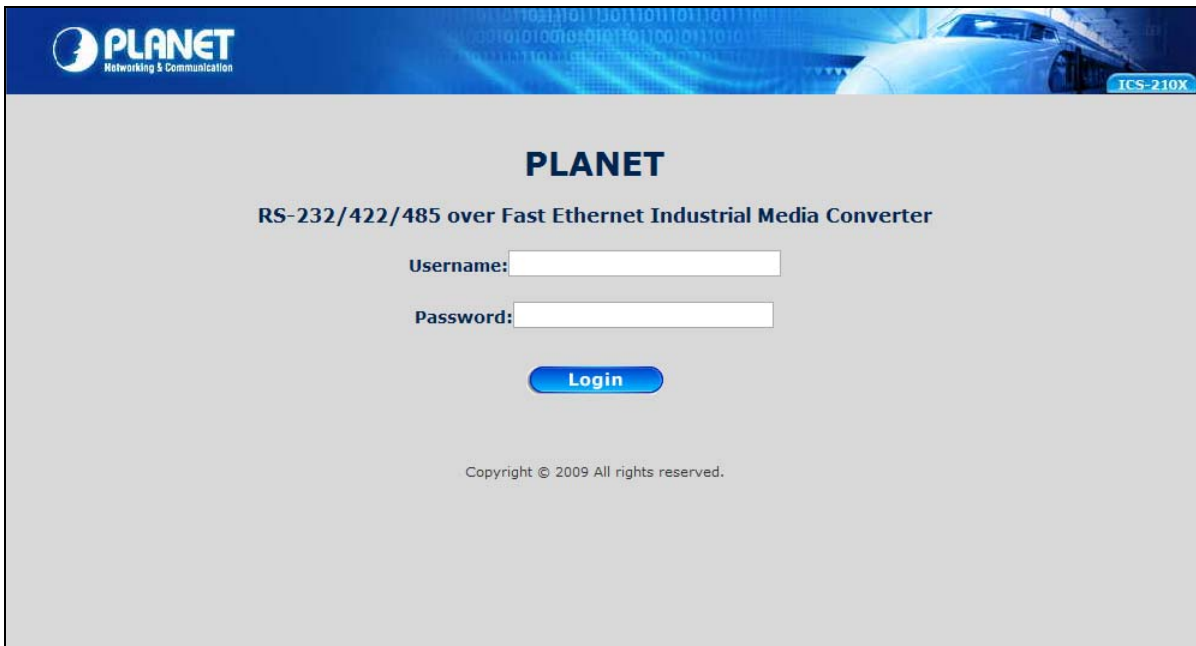


Figure 4-58 Login screen

5. SOFTWARE VCOM UTILITY

The ICS-210x Web Smart Media Converter provides software for Converter smart function configuration when the Converter operation mode on “**Virtual COM**”. - They can be configured through the Console. Two function groups are provide to easy used, can search device and create virtual COM to view as the console port.

This program can search ICS-210x Series devices; it will show information of the device. And user can use VCOM function creates virtual COM port for user using. Users can send data by virtual COM port, and virtual COM port will transfer data to Ethernet by windows socket. While VCOM got data from Ethernet, it will transfer data to virtual COM port by virtual COM component.

The VCOM is an integrated software suite that bundles Device Server Administrator and IP Serial Library, and provides something you need to monitor your ICS-210x from a remote location.

5.1 Installing the VCOM Utility

1. Insert the bundled CD disk into the CD-ROM drive to launch the autorun program. Once completed, a welcome menu screen will appear. Click the “VCOM” hyperlink, the below InstallShield Wizard dialog box will appear.

NOTE: If the welcome screen does not appear, click “Start” at the taskbar. Then, select “Run” and type “D:\Software\PLANET VCOM Utility_v31\VCOMSETUP.exe”, assume “D” is your CD-ROM drive.

2. Once the Setup program starts running, click **Next** when the **Welcome** window opens to proceed with the installation.

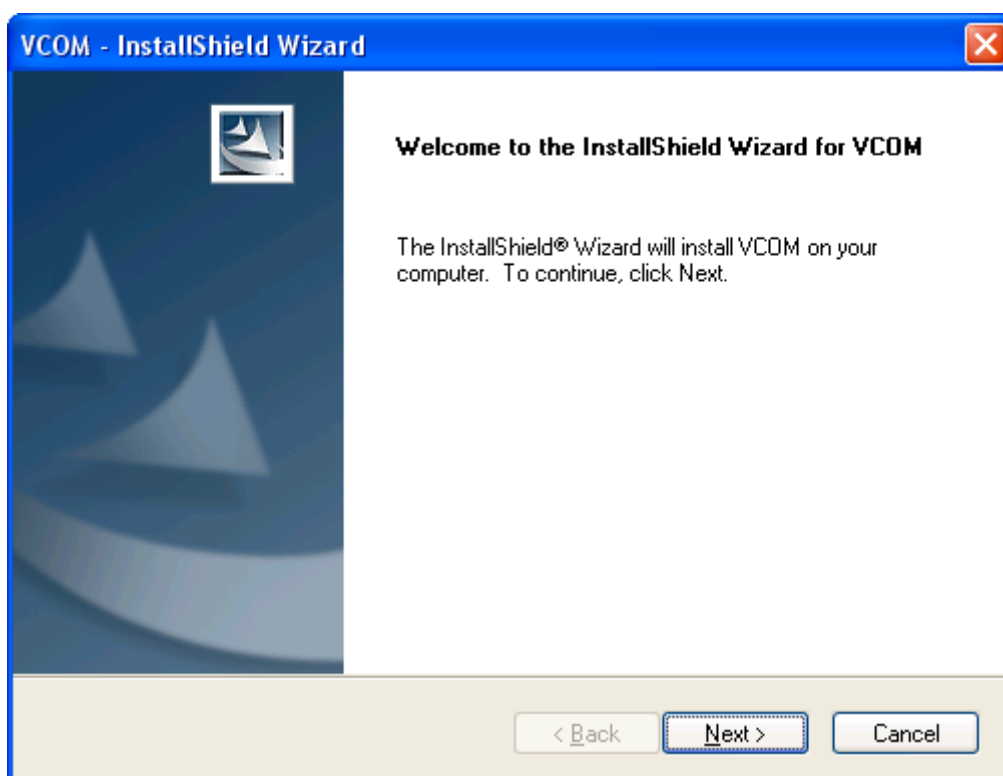


Figure 5-1 VCOM installation screen

- Click **Install** to install the program.

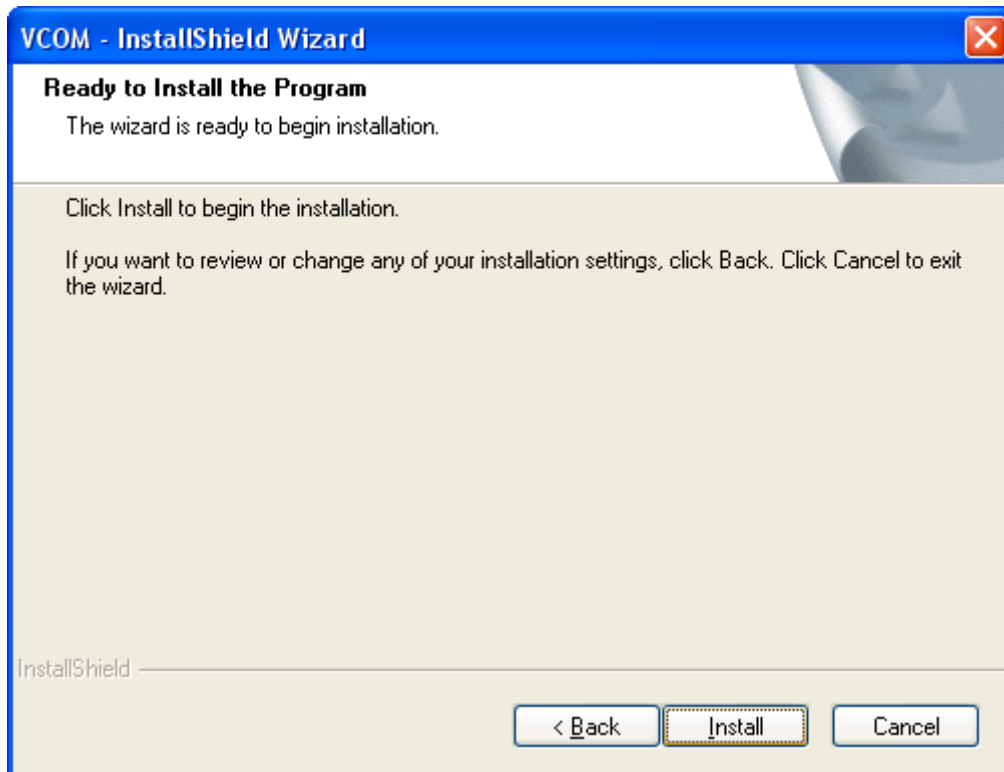


Figure 5-2 VCOM installation screen

- The **Installing** window reports the progress of the installation.
- Click **Finish** to complete

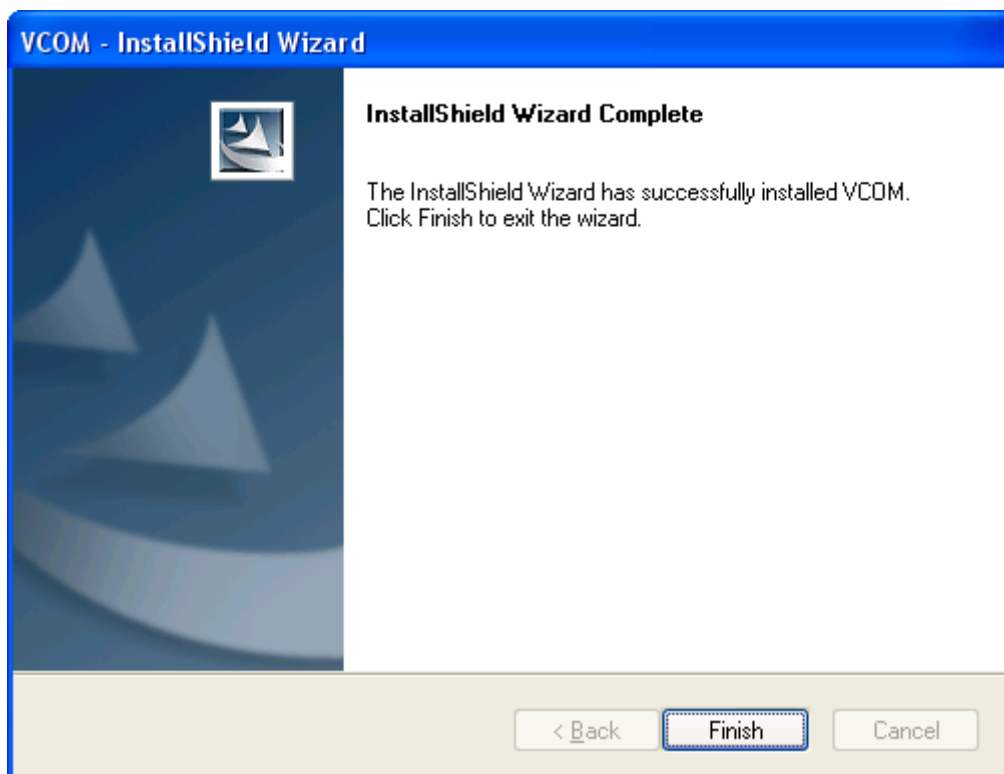


Figure 5-3 VCOM installation screen

6. To run the PLANET VCOM utility on the computer, click "Start" \ "All Programs" \ "PLANET" \ "VCOM" \ "VCOM"

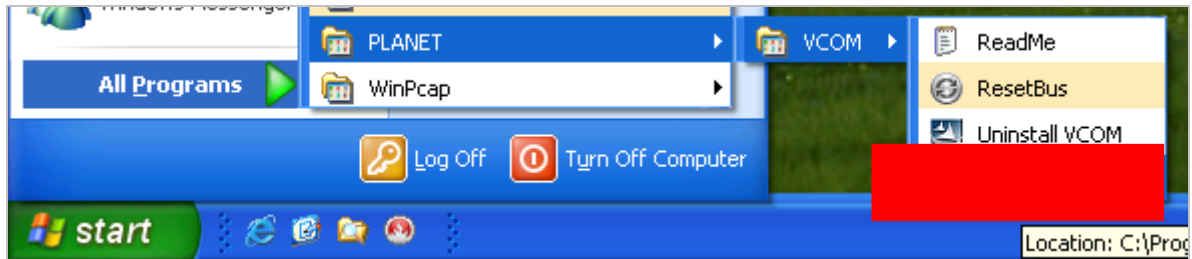
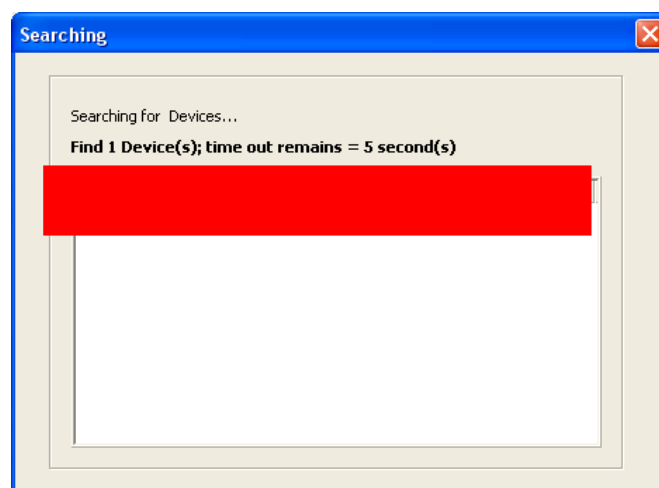
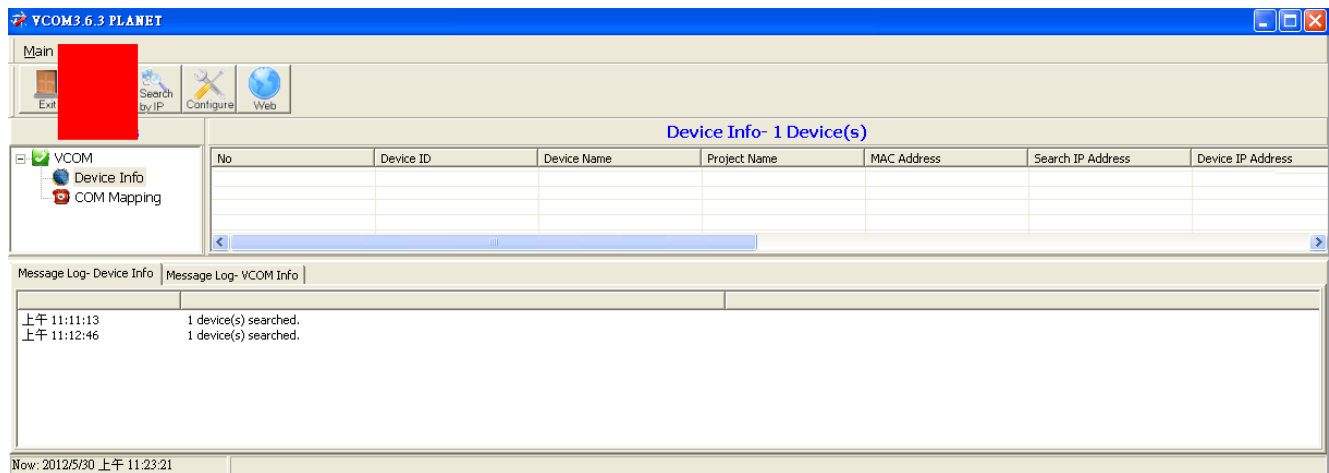


Figure 5-4 VCOM program path

5.2 Search the Device

Click the **Search** button to find the ICS-210x. It will show the ICS-210x device name, project number, MAC address and IP address.

1. Click the shortcut of **VCOM** on the desktop to run the VCOM program.
2. Click "**Search**" button in Main window. If any ICS-210x series device on the LAN, it will show the device name in the Searching window. While user clicks the device name, it will show device information in the list report.



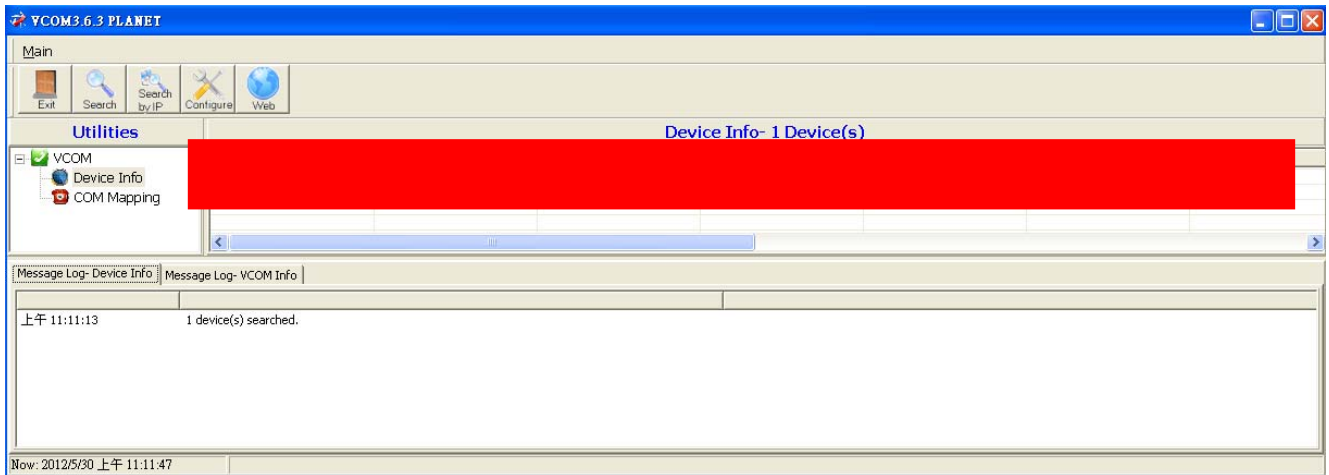


Figure 5-5 VCOM Device Search

5.3 Virtual COM

This function should be set the ICS-210x's operation mode to "Virtual COM" on the Web. Choose to create port like below:

1. If the device support Telnet, while user click "COM Mapping".

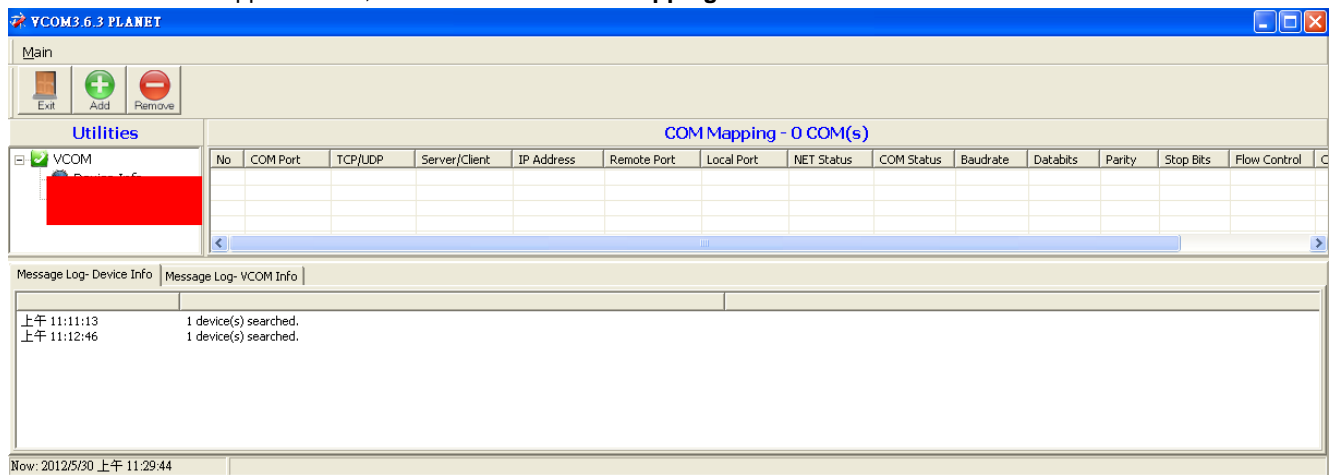


Figure 5-6 COM Mapping

2. While user click "Add" button, it will fill IP Address and Port number automatically.

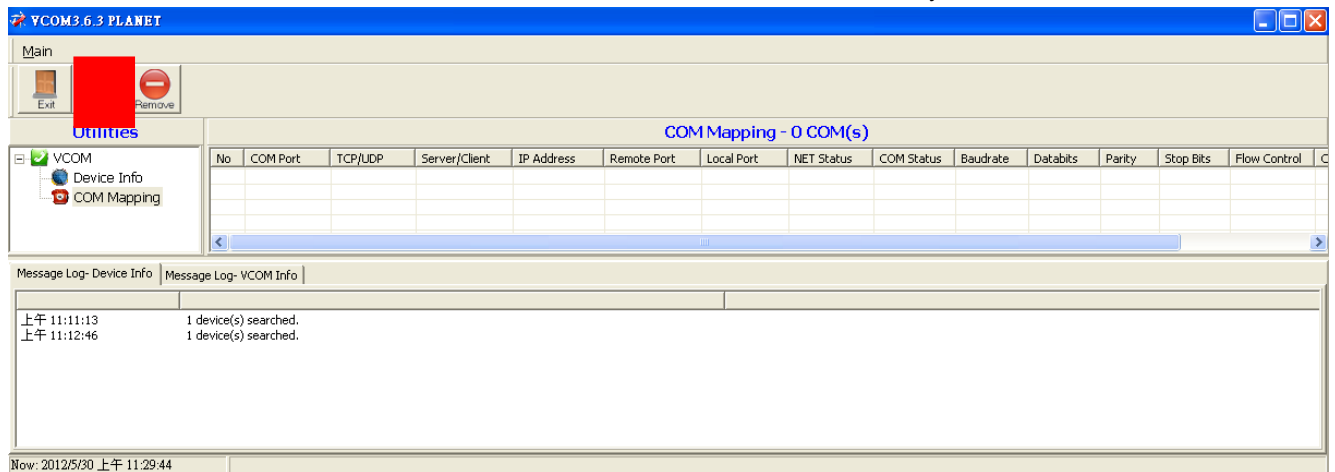


Figure 5-7 Add Virtual COM Port

3. Select device which user want and set up "TCP", "Client" mode, "COM" number and "RemotePort" number. Click "OK" button to create new virtual com port and establish telenet connection

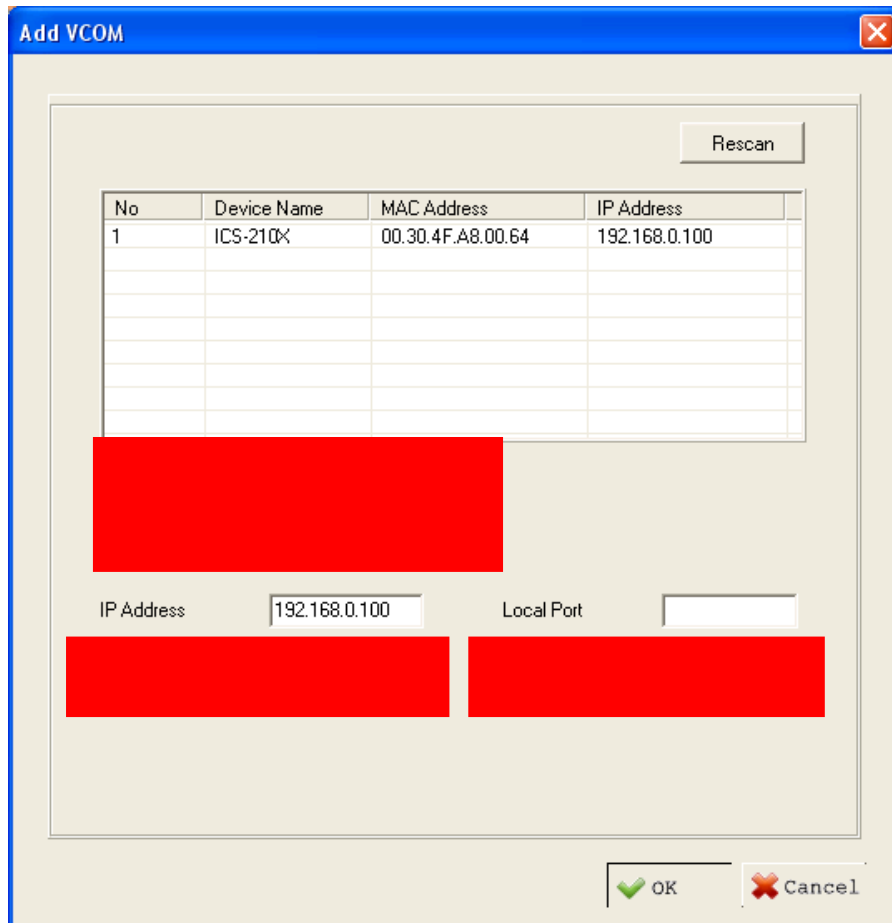


Figure 5-8 Add Virtual COM Port Configuration

4. Then set the HyperTerminal parameter



Figure 5-9 Hyper Terminal Configuration

5. then the VCOM will show connect information like below:

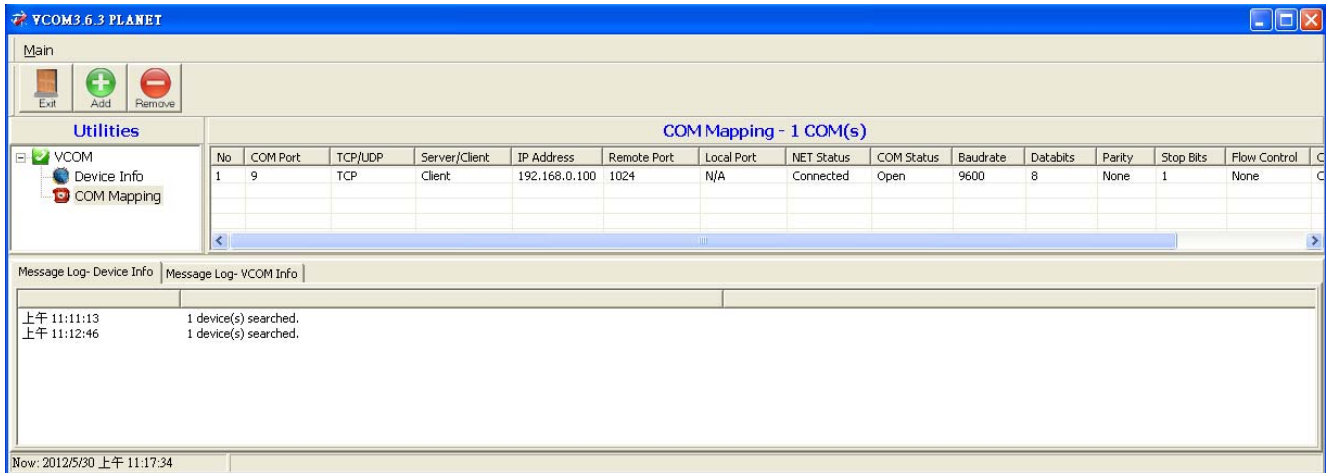


Figure 5-10 VCOM Configuration

6. Once the Virtual COM Port- COM9 connection is established, from the Windows Device Manager, a COM Port is added to the device list.

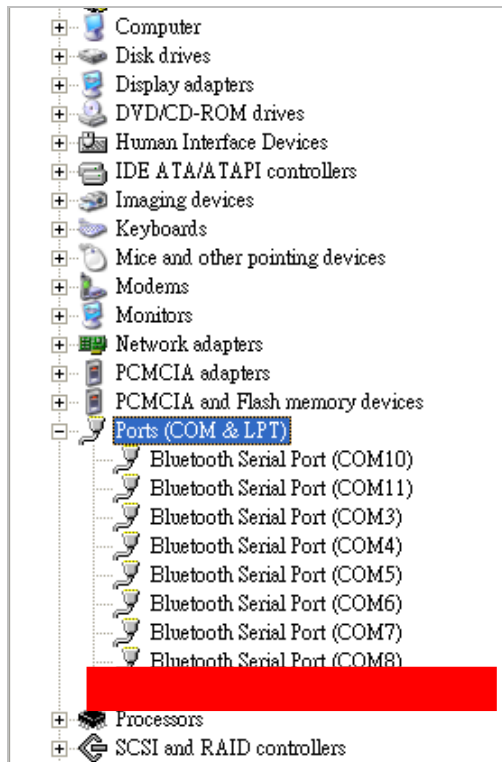


Figure 5-11 Windows Device Server - Virtual COM Port



When the Virtual COM creates COM port, the Device Manager will add "Virtual Serial Port". And delete the Port on the VCOM, the device will disappear.

APPENDIX A

A.1 PLANET Smart Discovery Utility

For easily list the ICS-210x in your Ethernet environment, the Planet Smart Discovery Utility from user's manual CD-ROM is an ideal solution.

The following install instructions guiding you for run the Planet Smart Discovery Utility.

1. Deposit the Planet Smart Discovery Utility in administrator PC.
2. Run this utility and the following screen appears.

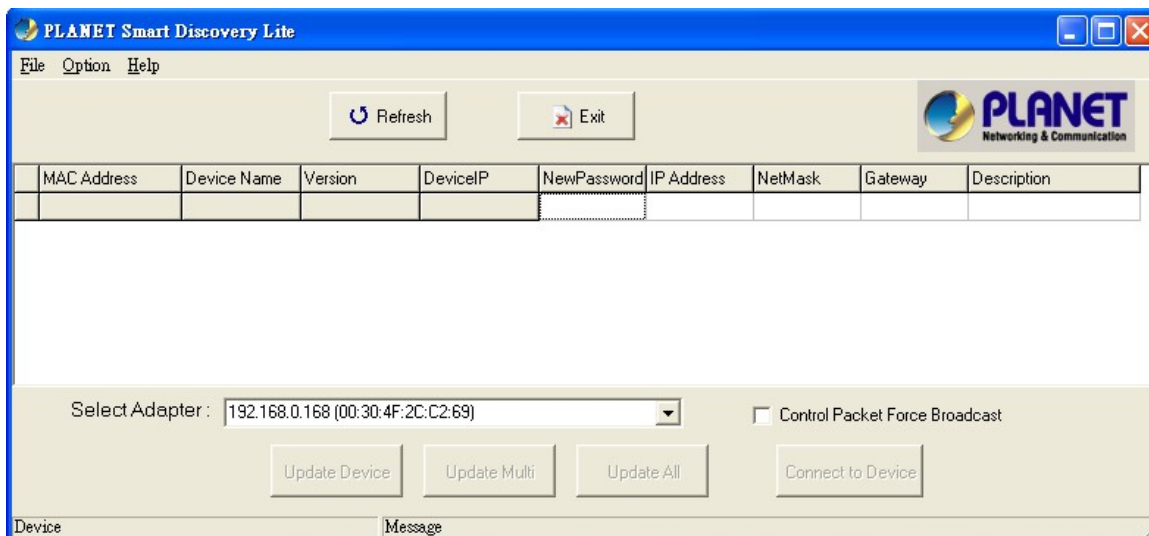


Figure A-1 Planet Smart Discovery Utility Screen

Note If there are two LAN cards or above in the same administrator PC, choose different LAN card by use the **“Select Adapter”** tool.

3. Press **“Refresh”** button for list current connected devices in the discovery list, the screen is shown as follow.

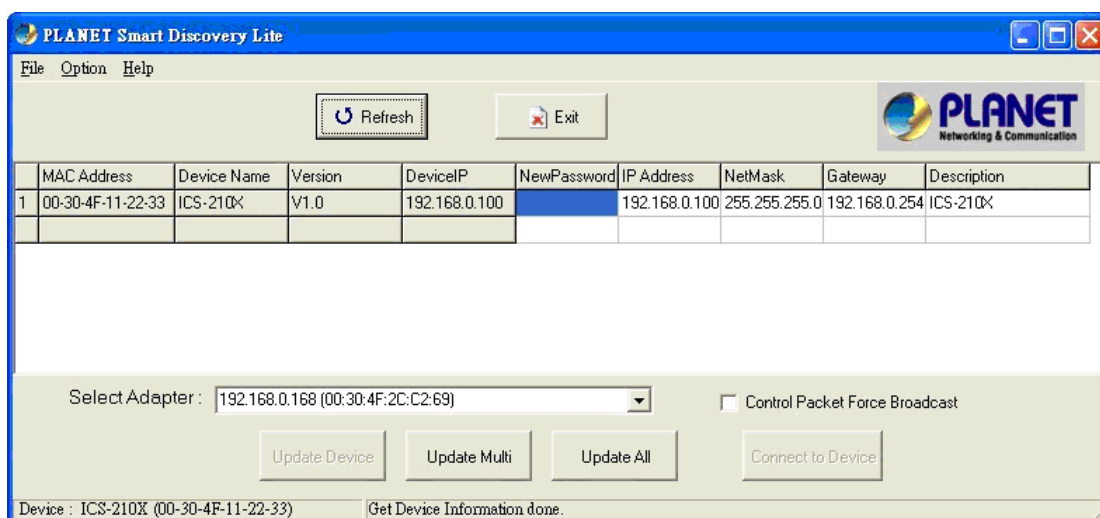


Figure A-2 Planet Smart Discovery Utility Screen

1. This utility show all necessary information from the devices, such as MAC Address, Device Name, firmware version, Device IP Subnet address, also can assign new password, IP Subnet address and description for the devices.
2. After setup completed, press “**Update Device**”, “**Update Multi**” or “**Update All**” button to take affect. The meaning of the 3 buttons above are shown as below:

Update Device: use current setting on one single device.

Update Multi: use current setting on choose multi-devices.

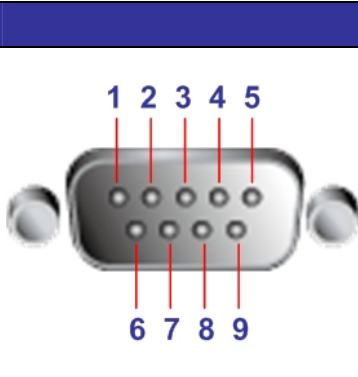
Update All: use current setting on whole devices in the list.

The same functions mentioned above also can be finding in “**Option**” tools bar.

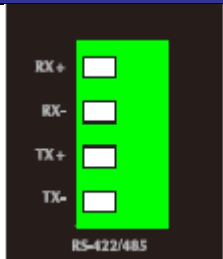
3. To click the “**Control Packet Force Broadcast**” function, it can allow assign new setting value to the Web Smart Switch under different IP subnet address.
6. Press “**Connect to Device**” button then the Web login screen appears.
7. Press “**Exit**” button to shutdown the planet Smart Discovery Utility.

A.2 Device’s RJ-232/RS-422/RS-485 Pin Assignments

■ DB9 Pin Define for RS-232

	DB9-PIN	RS-232
	1	DCD
	2	RXD
	3	TXD
	4	
	5	GND
	6	
	7	
	8	
	9	RI

■ Terminal Block Define for RS-422/485

	Terminal Block Pin	4-wire for RS-422	2-wire for RS-485
	RX+	RX+	Data A(+)
	RX-	RX-	Data B(-)
	TX+	TX+	
	TX-	TX-	

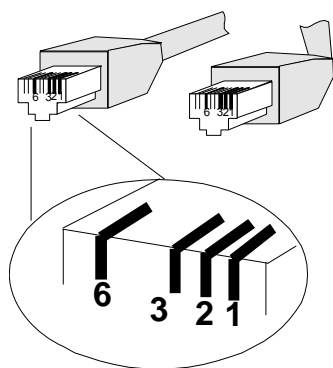
A.3 Device's RJ-45 Pin Assignments

■ 10/100Mbps, 10/100Base-TX

Contact	MDI	MDI-X
1	1 (TX +)	3
2	2 (TX -)	6
3	3 (RX +)	1
6	6 (RX -)	2
4, 5, 7, 8	Not used	Not used

Implicit implementation of the crossover function within a twisted-pair cable, or at a wiring panel, while not expressly forbidden, is beyond the scope of this standard.

A.4 RJ-45 cable pin assignment



There are 8 wires on a standard UTP/STP cable and each wire is color-coded. The following shows the pin allocation and color of straight cable and crossover cable connection:

Straight Cable		SIDE 1	SIDE2							
1	2	3	4	5	6	7	8	SIDE 1	1 = White / Orange	1 = White / Orange
2	3	4	5	6	7	8	2 = Orange		2 = Orange	
3	4	5	6	7	8			SIDE 2	3 = White / Green	3 = White / Green
4	5	6	7	8			4 = Blue		4 = Blue	
5	6	7	8						5 = White / Blue	5 = White / Blue
6	7	8							6 = Green	6 = Green
7	8								7 = White / Brown	7 = White / Brown
8									8 = Brown	8 = Brown
Straight Cable		SIDE 1	SIDE2							
1	2	3	4	5	6	7	8	SIDE 1	1 = White / Orange	1 = White / Orange
2	3	4	5	6	7	8	2 = Orange		2 = Green	
3	4	5	6	7	8			SIDE 2	3 = White / Green	3 = White / Orange
4	5	6	7	8			4 = Blue		4 = Blue	
5	6	7	8						5 = White / Blue	5 = White / Blue
6	7	8							6 = Green	6 = Orange
7	8								7 = White / Brown	7 = White / Brown
8									8 = Brown	8 = Brown

Figure A-1: Straight-Through and Crossover Cable

Please make sure your connected cables are with same pin assignment and color as above picture before deploying the cables into your network.

A.5 Fiber Optical Cable Connection Parameter

The wiring details are as below:

■ Fiber Optical patch Cables: (For ICS-2102 / ICS-2102S15 / ICS-2105A)

Model	Standard	Fiber Type	Cable Specification
ICS-2102	100Base-FX Wavelength (1300nm)	Multi-mode	50/125μm or 62.5/125μm
ICS-2102S15	100Base-FX Wavelength (1310nm)	Single-mode	9/125μm
ICS-2105A	100Base-FX Wavelength (Depend on SFP module)	Multi-mode Single-mode	50/125μm or 62.5/125μm 9/125μm

EC Declaration of Conformity

For the following equipment:

*Type of Product : Industrial RS-232/RS-422/RS485 over Ethernet Media Converter
*Model Number : ICS-2100, ICS-2102, ICS-2102S15, ICS-2105A
* Produced by:
Manufacturer's Name : **Planet Technology Corp.**
Manufacturer's Address : 10F., No.96, Minquan Rd., Xindian Dist.,
New Taipei City 231, Taiwan (R.O.C.)

is herewith confirmed to comply with the requirements set out in the Council Directive on the Approximation of the Laws of the Member States relating to Electromagnetic Compatibility Directive on (2004/108/EC).

For the evaluation regarding the EMC, the following standards were applied:

EN 55022	(Class A: 2010)
EN 61000-3-2	(2006 + A2:2009)
EN 61000-3-3	(2008)
EN 55024	(2010)
EN 50130-4	(2011)
IEC 61000-4-2	(2008)
IEC 61000-4-3	(2006 + A1:2007 + A2 :2010)
IEC 61000-4-4	(2004 + A1:2010)
IEC 61000-4-5	(2005)
IEC 61000-4-6	(2008)
IEC 61000-4-8	(2009)
IEC 61000-4-11	(2004)

Responsible for marking this declaration if the:

Manufacturer Authorized representative established within the EU

Authorized representative established within the EU (if applicable):

Company Name: Planet Technology Corp.

Company Address: 10F., No.96, Minquan Rd., Xindian Dist., New Taipei City 231, Taiwan (R.O.C.)

Person responsible for making this declaration

Name, Surname Kent Kang

Position / Title : Product Manager

Taiwan
Place

22rd, June, 2012
Date


Legal Signature

PLANET TECHNOLOGY CORPORATION

e-mail: sales@planet.com.tw http://www.planet.com.tw

10F., No.96, Minquan Rd., Xindian Dist., New Taipei City, Taiwan, R.O.C. Tel:886-2-2219-9518 Fax:886-2-2219-9528